



**INDUSTRY
LIGHTING PRODUCTS**



Publisher

EAE Lighting

Creation and design

EAE Lighting

Image credits

EAE Lighting

Disclaimer

We assume no responsibility for the content of references cited in this catalog. The content of the references is the sole responsibility of their publishers.

Copyright

All contents of this catalog are protected by copyright. The contents may not be stored, reproduced, distributed or used in any other way without the express written permission of EAE Aydınlatma A.Ş.

Contents

SROUND INDUSTRY	8
SROUND	10
SROUND NG	12
GARLED MEGA	14
REVOLED-X	16
REVOLED-X HE NG / NG / NG 50X50	18
REVERO	20
RERERO NG	22
RERERO SQ	24
HBL	26
HBC	28
VALERIA	30
PROLIT KOMPAKT	32
PROLIT	34
PROLIT PLUS	36
PROLIT PLUS APRON	38
PROLIT EFFECT	40
MFL	42
GPRONA	44

SPRONA	46
SPRONA PLUS	48
KANOLED	50
RA / RA2 / RA3 / RA CLASS II	52
HORUS 1-2	54
OSIRIS	56
ARKTOS NG V2	58
INFINOO	60
M-LINE	64
GALIS MEGA	66
GALIS NG / MINI NG	68
YPB NG	70
LINA NG	72
TORNADO	74
COZAR	76
YPL NG	78
TORIA MEGA	80
SAVIOR MATE	82
DIMKO	84

EAE Lighting

As EAE Lighting, our adventure of innovation and passion that began in 1983 continues unabated. Thanks to the knowledge and experience of the past 40 years, we have made a name for ourselves with our high-bay luminaires that set the standards in the sector, while combining the same understanding of quality with aesthetics and functionality in our decorative products.

We work with dedication in our modern production facilities, focusing on innovation at every step of our on-going experience. Designed and developed by our R&D department, our products are meticulously tested in our laboratories, helping us to maintain the high standards of quality and durability that are synonymous with EAE Lighting. Thanks to these standards, our long-lasting products bring us one step closer to our goal of a greener world with less waste, less energy consumption and less use of natural resources.



1983
Established

%90 Domestic approved supplier approval



33,6 Million €
R&D Investments



362
Number of employees



4,4 Million US Dollars
Infrastructure Investments,



4344
(Person x Hour) Occupational Health and Safety Training,



2.
Turkey Exporters Assembly (TIM)



15966
(Person x Hour) Total training duration



2860 GWh
Capacity of Renewable Energy (GES)



40
Number of countries of export



911 Tonne
Recycled Waste Amount



%91,33
Rate of customer satisfaction



2.3 Million US Dollars
Renewable Energy (GES) Investments,



1629 m3
Capacity of Rain Water Storage



%18
Number of women employees



1046
(Person X Hour) Sustainability and Decarbonisation Training



Business Areas



Heavy Industry Oil&Gas

- Petrochemical
- Refinery
- Offshore
- Mining



Automotive Iron&Steel-Glass

- Automotive and Supply Industries
- Glass Factory
- Iron & Steel- Bloomeries



Power Plants

- Nuclear Power Plants
- Steam Power Plants
- Combined Cycle Plants
- HES, JES, GES



Factories Manufacturing Plants

- Textile
- Machinery-Metal
- Plastic
- Food Inc
- Medicine



Railways & Tunnels

- Metro Tunnels
- Highway Tunnels
- Railway Tunnels
- Train Stations



Data Centers

- GSM & Telecom Companies
- Co Hosting Service Providers
- Financial Institutions
- Public Data Centers
- Edge Data Centers
- Computer Rooms



Healtcares

- Public Hospitals
- Private Hospitals
- Clinics
- Laboratories



Complex Buildings & Towers

- Tower & Skycrapers
- Malls
- Office Buildings
- Hotels
- Residences
- Government Buildings



Sport Complexes

- Stadiums
- Indoor Sport Complexes
- Olympic Complexes



Airports

- Terminal Buildings
- Car Park
- Hanger Buildings
- Service Buildings

Certificate

- ISO 9001: 2015
- ISO 10002: 2018
- ISO 14001: 2015
- ISO 27001: 2013
- ISO 45001: 2018
- ISO 50001: 2018

- ISO 14064-1:2018
- TURKISH ACCREDITATION AGENCY
- DEKRA
- DIALUX PARTNER
- UL SOLUTIONS (DEMKO)



Scan QR Code for
Certificates

SROUND INDUSTRY

-35°C +80°C



- Iron-Steel & Heavy Industry
- Industry Areas
- Cranes

High resistance up to +80°C in industrial environments

- ✓ Ambient operating temperature from -35°C to +80°C
- ✓ IP65 and IP66 protection & IK09 impact resistance class / Tempered glass
- ✓ Maximum performance in harsh industrial environments
- ✓ External box option up to 10 m cable length
- ✓ Various mounting and fixing options
- ✓ Unique design



SROUND Industry

52 W - 405 W
8629 lm - 52400 lm

OPTIC
Arena / Lowbay

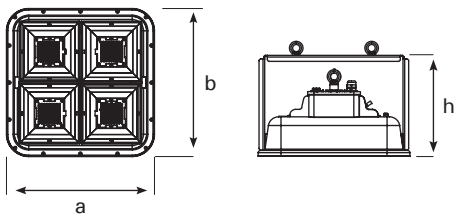
SROUND DOUBLE

104 W - 810 W
17258 lm - 104800 lm

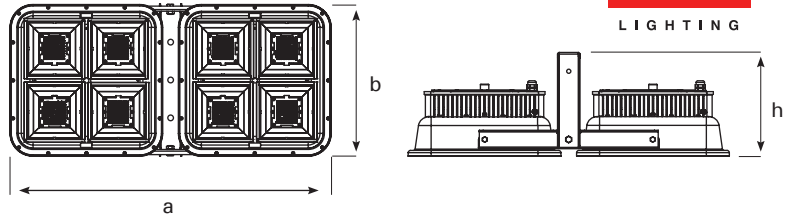
OPTIC
Arena / Lowbay

*The values specified above represent the minimum and maximum ranges for all variations of the product.
To access the technical specifications of the product that best suits your needs, please visit our website or contact our sales representative.*

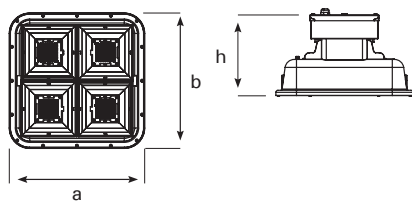
Technical Drawing | Industry



Technical Drawing | Double



Technical Drawing | Industry Ext.



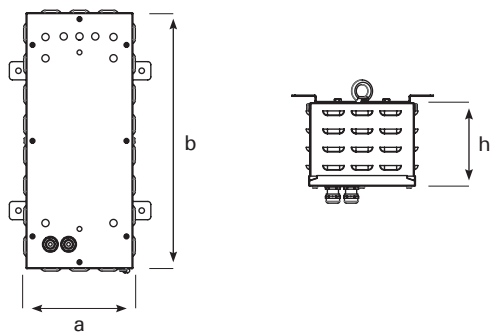
Dimensions (mm)

	a	b	h
Industry	401	401	269
Double	842	401	276
Industry Ext.	400	400	269

Weight of Excluding External Box (kg)

Industry	8,30
Double	19,10

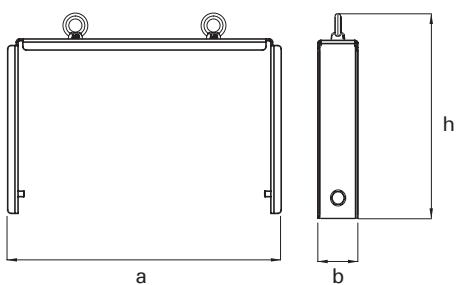
External Drive Module



Dimensions (mm)

	a	b	h
External Drive Module	184	429	138

Single U Type Hanger Set



Dimensions (mm)

	a	b	h
External Drive Module	396	59	290

SROUND

-25°C +60°C



- Aviation
- Automotive Industry
- Logistics
- Glass and Ceramics
- Machinery and Electronics
- Chemical and Plastic
- Wood and Paper
- Sports Halls

For those who aim high

- ✓ Ultra-high performance high bay LED luminaire
- ✓ IP65 - IP66 protection & IK09 impact resistance class
- ✓ Ambient operating temperature from -25°C to +60°C
- ✓ Variety of suspension kits allowing different mounting types
- ✓ Up to 3 hours emergency kit options / Different type driver options for smart lighting



SROUND Mini

33 W – 88 W
4605 lm – 11367 lm

OPTIC
75° / 103°



SROUND IP65 & IP66

52 W – 226 W
8629 lm – 32400 lm

OPTIC
Arena / Lowbay /
Extra-Lowbay



SROUND Crane

68 W – 173 W
10500 lm – 25600 lm

OPTIC
Arena / Lowbay /
Extra-Lowbay



SROUND Chemical

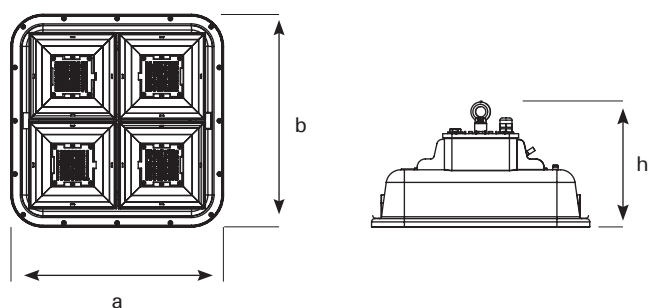
69 W – 137 W
12171 lm – 21506 lm

OPTIC
Arena / Lowbay /
Extra-Lowbay

The values specified above represent the minimum and maximum ranges for all variations of the product.

To access the technical specifications of the product that best suits your needs, please visit our website or contact our sales representative.

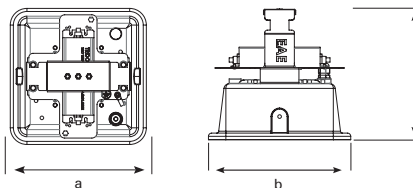
Technical Drawing | IP65 & IP66



Dimensions (mm)

	a	b	h
IP65 & IP66 koruma	400	400	231
Mini	265	265	244
Crane	400	400	231
Chemical	400	400	231

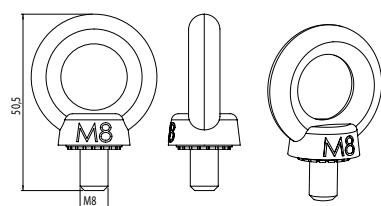
Technical Drawing | Mini (TK)



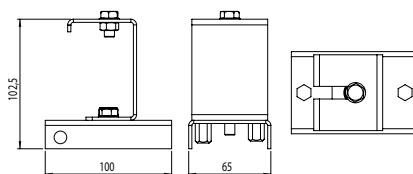
Weight (kg)

IP65 & IP66 koruma	7,20
Mini	3,50
Crane	7,70
Chemical	7,20

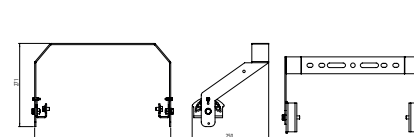
Mapa Single Hanger Set



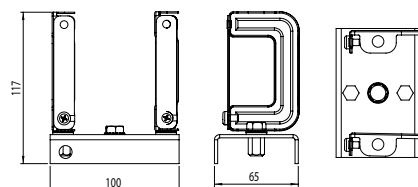
Single Cable Tray Hanger Set



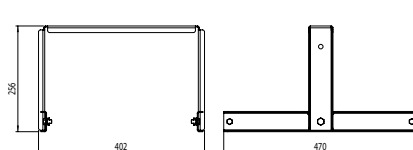
Single U Type Hanger Set



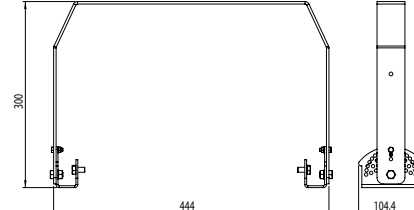
Busbar Hanger Set



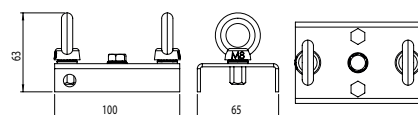
Double Hanger Set



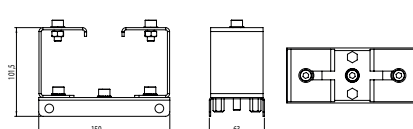
Angled Hanger Set



Double Mapa Hanger Set



Double Cable Tray Hanger Set



SROUND NG

-20°C +50°C



- Aviation
- Automotive Industry
- Logistics
- Glass and Ceramics
- Machinery and Electronics
- Chemical and Plastic
- Wood and Paper
- Sports Halls

Lighter, stronger

- ✓ Ultra-high performance high bay LED luminaire
- ✓ IP65 protection class & IK07 impact resistance
- ✓ Wide ambient operating temperature range from -20°C to +50°C
- ✓ Variety of suspension kits allowing different mounting types
- ✓ Up to 3 hours emergency kit options / Different type driver options for smart lighting



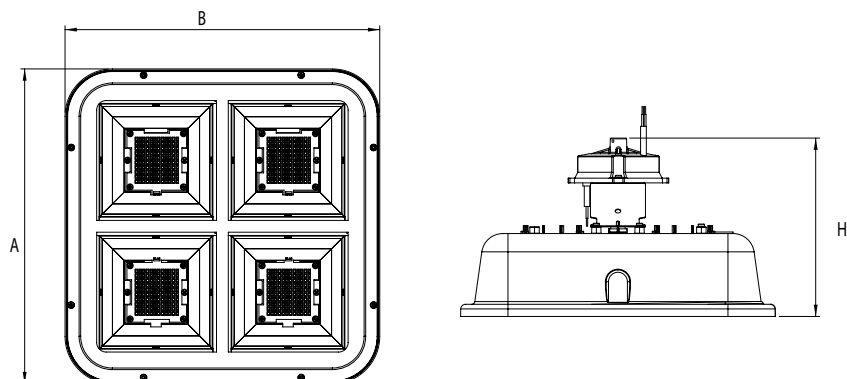
Sround NG

95 W / 108 W / 135 W / 168 W / 187 W
14733 lm - 26901 lm

OPTIC

Arena, Lowbay, Asymmetric

Technical Drawing | IP65



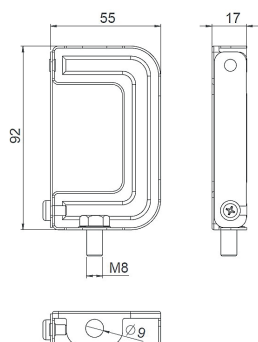
Dimensions (mm)

	a	b	h
Standard	400	400	231
ACK Model	400	400	245

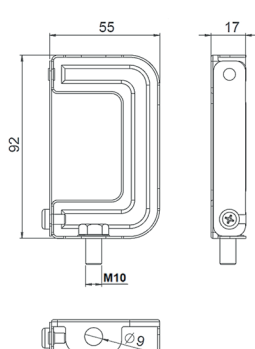
Weight (kg)

Standard	5,90
ACK Model	8,30

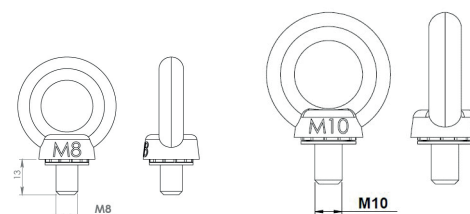
EMG Busbar Hanger Set



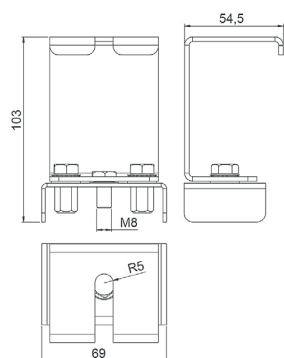
Standard Busbar Hanger Set



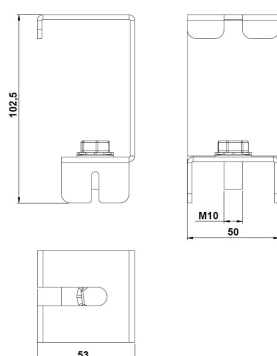
EMG Mapa / Standard Mapa Hanger Set



EMG Cable Tray Hanger Set



Standard Cable Tray Hanger Set



GARLED

MEGA

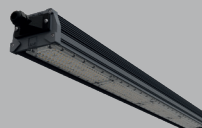
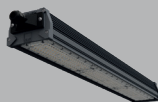
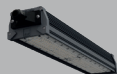
-20°C +50°C



- Iron-Steel & Heavy Industry
- Aviation
- Automotive Industry
- Logistics
- Glass and Ceramics
- Machinery and Electronics
- Chemical and Plastic
- Wood and Paper
- Sports Halls

For those who aim high

- ✓ High performance LED luminaire
- ✓ IP65 protection & IK09 impact resistance class
- ✓ Ambient operating temperature from -20°C to +50°C
- ✓ A variety of suspension kits to allow different types of mounting



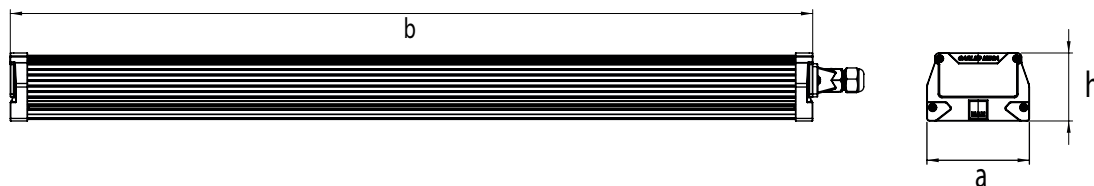
GARLED MEGA

46W / 80W / 127W / 160W / 215W
7000 lm - 34406 lm

OPTIC

15° / 25° / 40° / 60° / 90° / AS

Technical Drawing | IP65



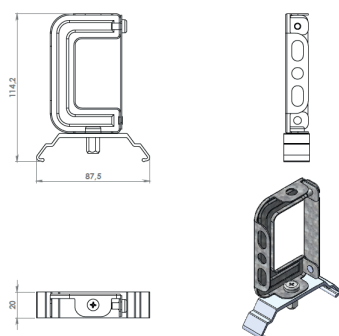
Dimensions (mm)

	a	b	h
1X	104,3	357	69,2
2X	104,3	613	69,2
3X	104,3	869	69,2
4X	104,3	1125	69,2
5X	104,3	1381	69,2

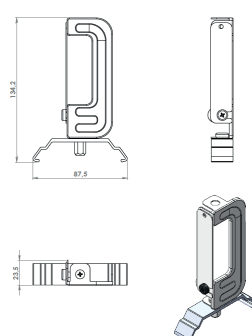
Weight (kg)

1X	1,02
2X	1,70
3X	2,35
4X	3,10
5X	3,99

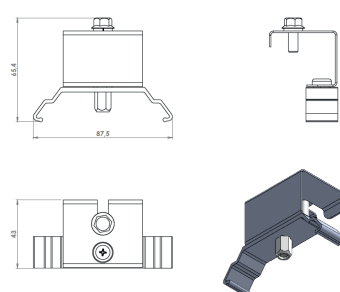
Busbar Hanger Set



Busbar Hanger Set (Single)

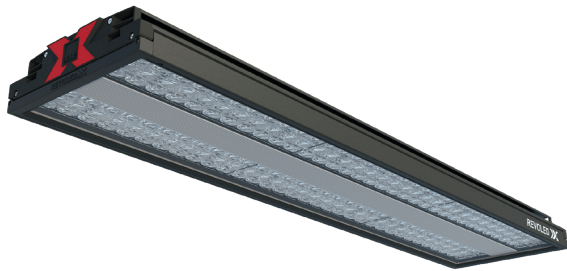


Cable Tray Hanger Set



REVOLED-X

-30°C +70°C



Experience performance at the highest level

- Iron-Steel & Heavy Industry
- Aviation
- Automotive Industry
- Logistics
- Glass and Ceramics
- Machinery and Electronics
- Chemical and Plastic
- Wood and Paper
- Sports Halls

- ✓ Ambient operating temperature from -30°C to +70°C
- ✓ IP65 - IP66 protection & IK07 - IK08 - IK09 impact resistance class
- ✓ Mounting types: Cable tray / Busbar / Angled wall / Seismic
- ✓ Up to 3 hours emergency kit / DALI - Wireless control options RF



REVOLED-X

28 W - 128 W
4163 lm - 21078 lm

OPTIC

30°x90° / 30° / 60° / 90° / AS / DA / 25x105°

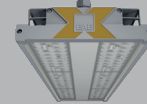


REVOLED-X EVO

67 W - 338 W
9008 lm - 44226 lm

OPTIC

30°x90° / 30° / 60° / 90° / AS / DA / 25x105°



REVOLED-X EVO IP65

67 W - 338 W
9008 lm - 44226 lm

OPTIC

30°x90° / 30° / 60° / 90° / AS / DA / 25x105°

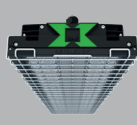


REVOLED-X HOT / HOT PLUS

28 W - 128 W
4294 lm - 21078 lm

OPTIC

30°x90° / 30° / 60° / 90° / AS / DA / 25x105°



REVOLED-X SPORT

28 W - 337 W
4294 lm - 42102 lm

OPTIC

30°x90° / 30° / 60° / 90° / AS / DA / 25x105°



REVOLED-X STERIL

28 W - 128 W
4294 lm - 21078 lm

OPTIC

30°x90° / 30° / 60° / 90° / AS / DA / 25x105°



REVOLED-X FOOD / FOOD COLD

28 W - 128 W
4294 lm - 21078 lm

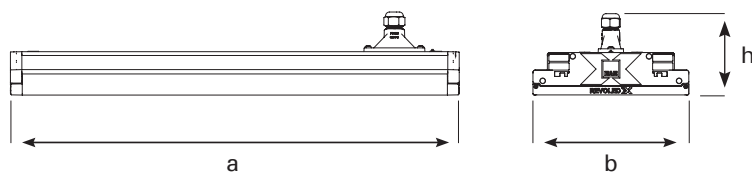
OPTIC

30°x90° / 30° / 60° / 90° / AS / DA / 25x105°

The values specified above represent the minimum and maximum ranges for all variations of the product.

To access the technical specifications of the product that best suits your needs, please visit our website or contact our sales representative.

Technical Drawing



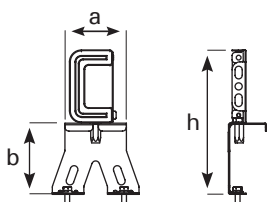
Dimensions (mm)

	a	b	h
Standard	423	209	109
Dali CG (Dual Input)	493	209	109
1,3 hours EMG*	950	209	109
Boxed 1.3 hours EMG*	603	209	135

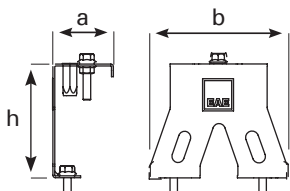
Weight (kg)

Standard	3,24
Dali CG (Dual Input)	3,77
1,3 hours EMG*	7,26
Boxed 1.3 hours EMG*	7,00

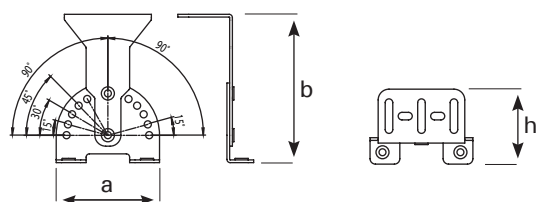
Busbar Hanger Set (SL / DL)



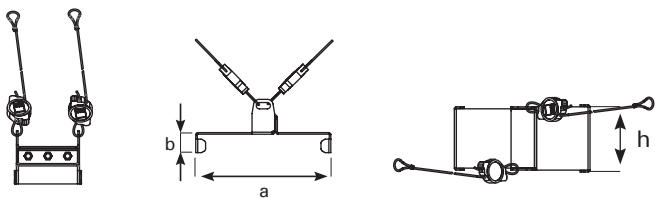
Cable Tray Hanger Set



Angular Hanger Set



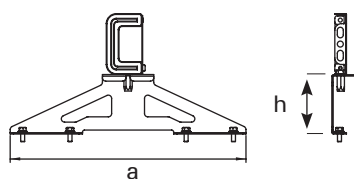
Seismic Hanger Set



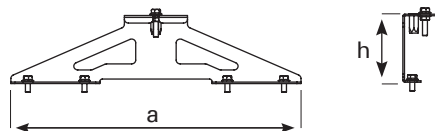
Dimensions (mm)

	a	b	h
Busbar Hanger Set (SL/DL)	78	90	182,5
Double Busbar Hanger Set	182,6	-	90
Cable Tray Hanger Set	48	110	90
Double Tray Hanger Set	358,60	-	90

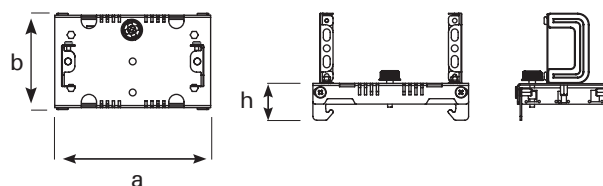
Double Busbar Hanger Set (SL/DL)



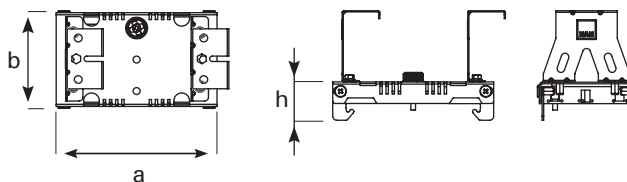
Double Tray Hanger Set



90° Busbar Hanger Set (SL/DL)



90° Cable Tray Hanger Set



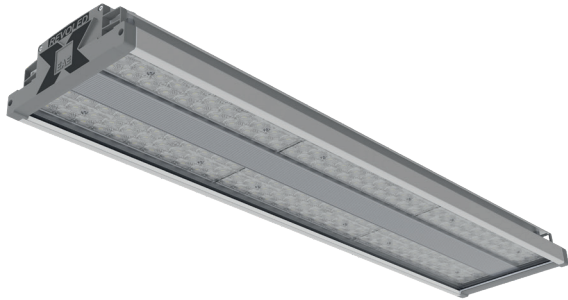
Dimensions (mm)

	a	b	h
Angular Hanger Set	95	135	69,5
90° Busbar Hanger Set (SL/DL)	205	122	48
Seismic Hanger Set	171,88	25,30	75
90° Cable Tray Hanger Set	205	122	48

REVOLED-X

HE NG / NG / NG 50x50

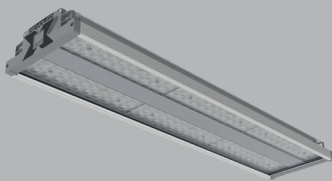
-20°C +40°C



Experience performance at the highest level

- Iron-Steel & Heavy Industry
- Aviation
- Automotive Industry
- Logistics
- Glass and Ceramics
- Machinery and Electronics
- Chemical and Plastic
- Wood and Paper
- Sports Halls

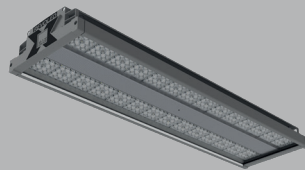
- ✓ Ambient operating temperature from -20°C to +40°C
- ✓ IP65 protection & IK07 impact resistance class
- ✓ Mounting types: Cable tray / Busbar / Angled wall / Seismic
- ✓ Up to 3 hours emergency kit / DALI - Wireless control options RF



REVOLED-X
HE NG

27 W - 164 W
3662 lm - 26267 lm

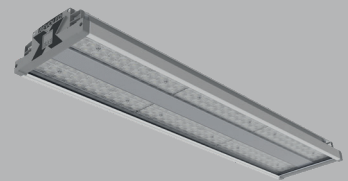
OPTIC
60° - 90°



REVOLED-X
NG 50x50

68 W - 285 W
9568 lm - 40782 lm

OPTIC
60° - 90°



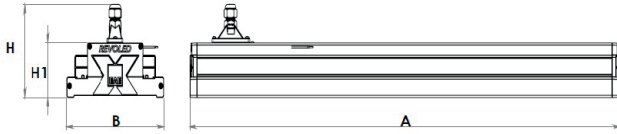
REVOLED-X
NG

27 W - 196 W
4500 lm - 33000 lm

OPTIC
60° - 90°

The values specified above represent the minimum and maximum ranges for all variations of the product. To access the technical specifications of the product that best suits your needs, please visit our website or contact our sales representative.

Technical Drawing



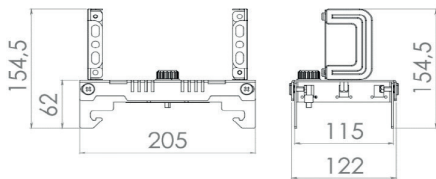
Dimensions (mm)

	a	b	h	h1
HE NG	438,5	203	128	75
NG 50x50	355,5	203	126	75
X NG	442	203	126	75

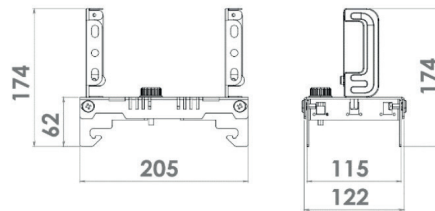
Weight (kg)

HE NG	4,00
NG 50x50	4,00
X NG	4,00

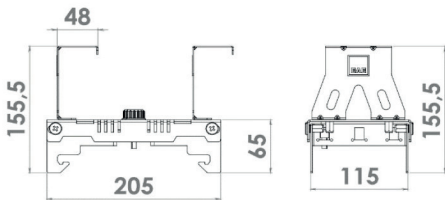
Busbar Hanger Set



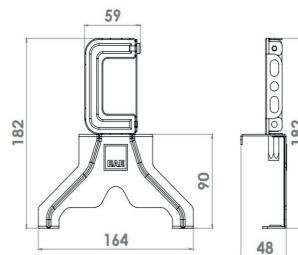
KYS Busbar Hanger Set



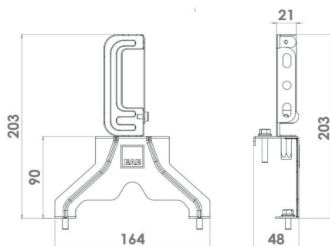
Cable Tray Hanger Set



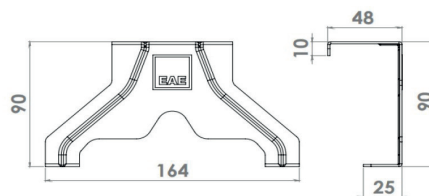
Busbar Hanger Set



KYS Busbar Set



Cable Tray Hanger Set



REVERO

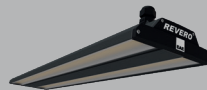
-20°C +40°C



- Industrial Plants
- Aviation and Airports
- Logistics
- Sports Halls

Maximum comfort in lighting

- ✓ LED luminaire with high ceiling
- ✓ IP65 protection & IK05 impact resistance class / Aluminum injection housing
- ✓ Optical options: transparent diffuser / opal diffuser / microprismatic diffuser
- ✓ Ambient operating temperature from -20°C to +40°C
- ✓ Up to 3 hours emergency kit options / Different type driver options for smart lighting

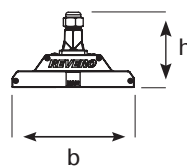
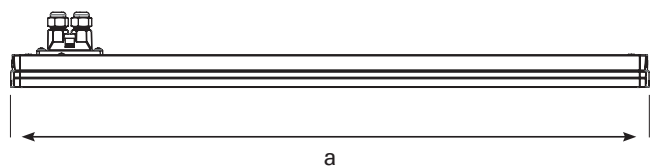


REVERO

70 W – 149 W
9294 lm – 22400 lm

Microprismatic Diffuser /
Opal Diffuser /
Transparent Diffuser

Technical Drawing



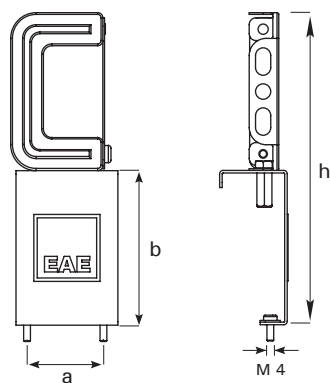
Dimensions (mm)

	a	b	h
Standard	773	148	92

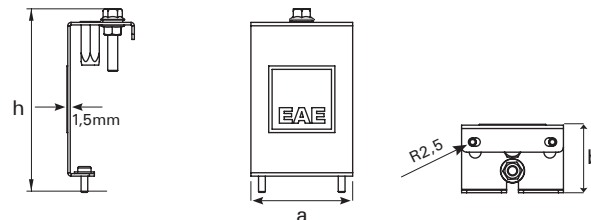
Weight (kg)

Standard	1,90
----------	------

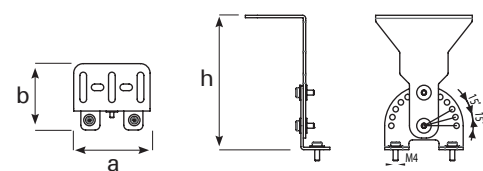
Busbar Hanger Set (SL / DL)



Cable Tray Hanger Set



Angular Hanger Set

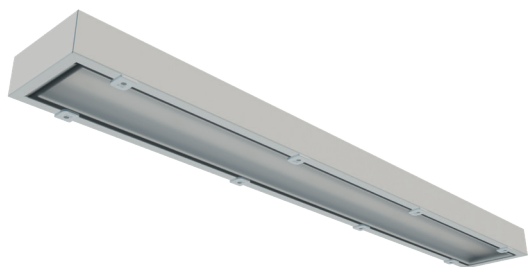


Dimensions (mm)

	a	b	h
Busbar Hanger Set (SL/DL)	45	90	182
Cable Tray Hanger Set	60	40	107
Angular Hanger Set	47	70	109,5

RERERO NG

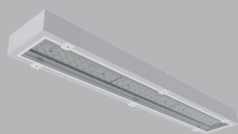
-20°C +35°C



- Closed Warehouses
- Factories and Workshops
- Sports Halls
- Service Stations
- Commercial Buildings

Optimum lighting quality, minimum cost

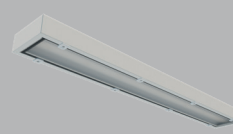
- ✓ IP64 protection & IK08 impact resistance class / Lightweight body design
- ✓ High energy savings for businesses
- ✓ Easy maintenance thanks to its advanced design
- ✓ Ambient operating temperature from -20°C to +35°C
- ✓ Can be mounted on busbar or cable tray



RERERO LENS

50 W – 115 W
6579 lm – 16321 lm

Tempered Glass



RERERO NG

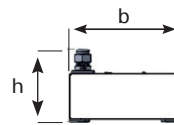
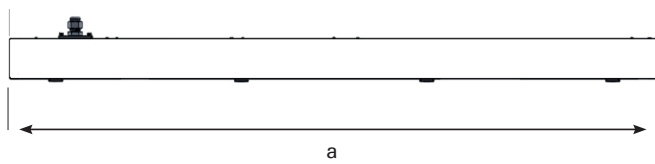
70 W – 150 W
8600 lm – 18000 lm

Tempered Sandy Glass

The values specified above represent the minimum and maximum ranges for all variations of the product.

To access the technical specifications of the product that best suits your needs, please visit our website or contact our sales representative.

Technical Drawing



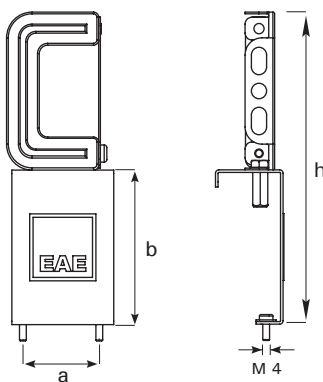
Dimensions (mm)

	a	b	h
Standard	770	154	96,8

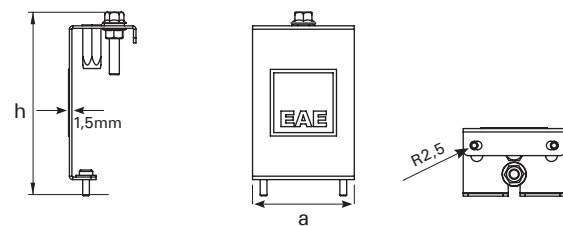
Weight (kg)

Standard	6,50
----------	------

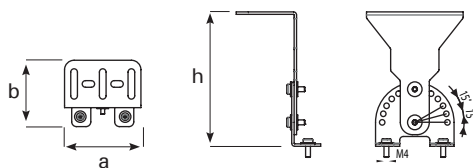
Busbar Hanger Set (SL / DL)



Cable Tray Hanger Set



Angular Hanger Set



Dimensions (mm)

	a	b	h
Busbar Hanger Set (SL/DL)	45	90	182
Cable Tray Hanger Set	60	40	107
Angular Hanger Set	47	70	109,5

RERERO SQ

-20°C +50°C



- Logistics
- Automotive
- Machinery and Electronics
- Airport
- Glass and Ceramics
- Chemical and Plastic
- Wood and Ceramics

Specially designed for industrial environments

- ✓ Cost effective high ceiling luminaire
- ✓ IP64 protection & IK07 impact resistance class
- ✓ Ambient operating temperature from -20°C to +50°C
- ✓ Up to 3 Hours emergency kit options / DALI Control

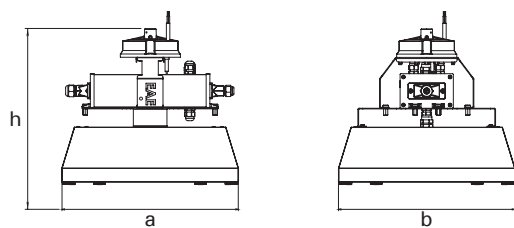


RERERO SQ

70 W – 133 W
11598 lm - 19938 lm

OPTIC
Arena / Lowbay

Technical Drawing



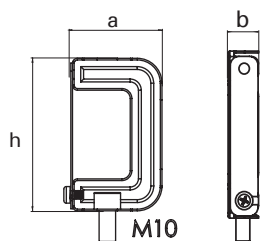
Dimensions (mm)

	a x b	h
Standard	378,5	222
ACK Model	378,5	334

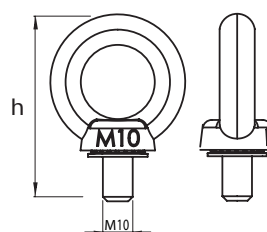
Weight (kg)

Standard	4,90
ACK Model	6,80

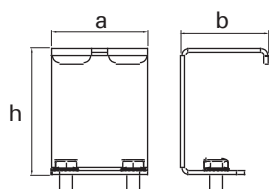
Busbar Hanger Set (SL / DL)



Eye Bolt Hanger Set



Cable Tray Hanger Set



Dimensions (mm)

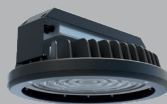
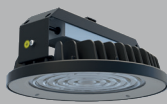
	a	b	h
Busbar Hanger Set (SL / DL)	55	17	92
Eye Bolt Hanger Set	-	-	62,5
Cable Tray Hanger Set	53	50	102,5



- Industrial Plants
- Aviation and Airports
- Logistics
- Sports Halls

Optimized lighting performance for industrial plants

- ✓ High performance high bay LED luminaire
- ✓ IP65 - IP66 protection & IK10 impact resistance class / Aluminum injection housing and silk screened glass
- ✓ Ambient operating temperature from -30°C to +65°C
- ✓ Sensor option to provide smart lighting control
- ✓ Suitable luminaire for indoor and outdoor areas.
- ✓ Up to 3 hours emergency kit options / Different type driver options for smart lighting



HBL IP65 Lens

88 W – 182 W
11200 lm – 27418 lm

OPTIC
55° / 90°

HBL IP66 Lens

65 W – 261 W
9295 lm – 41314 lm

OPTIC
55° / 90°

HBL IP66 Lens+ Glass

65 W – 253 W
8700 lm – 36400 lm

OPTIC
55° / 90°

HBL PRJ TK

167 W – 253 W
22596 lm – 36400 lm

OPTIC
55° / 90°

HBL V6

109 W – 178 W
17728 lm – 27865 lm

OPTIC
60° / 90°

HBL NG

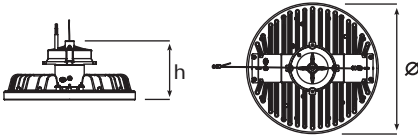
86 W – 230 W
33595 lm – 33596 lm

OPTIC
55° / 90°

The values specified above represent the minimum and maximum ranges for all variations of the product.

To access the technical specifications of the product that best suits your needs, please visit our website or contact our sales representative.

IP65 Lens



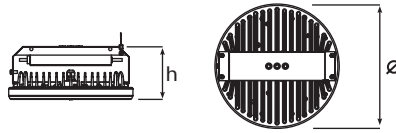
Dimensions (mm)

	Ø x h	
IP65 Lens	315	147
IP66 Lens + Glass	315	135
IP66 Lens	315	127

Weight (kg)

IP65 Lens + Glass	4,60
IP66 Lens + Glass	5,50
IP66 Lens	6,50

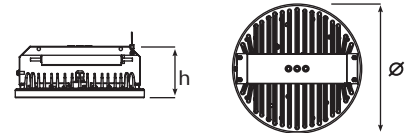
IP66 Lens + Glass



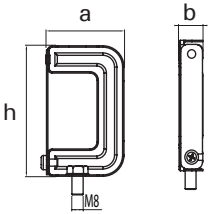
Dimensions (mm)

	a	b	h
Busbar Hanger Set (SL/DL)	55	17	92
Single Eye Bolt Hanger Set	-	-	50,5
Cable Tray Hanger Set	60	54,5	80
Cable Tray EMG Kit Hanger Set	69	54,5	103
Double Eye Bolt Hanger Set	-	-	50,5
Double Eye Bolt Hanger Set for EMG Luminaires	78	45	59,5
HBL IP65 Eye Bolt Hanger Set	-	-	62,5
HBL IP65 Tray Hanger Set	-	-	103
HBL IP65 Busbar Hanger Set (SL/DL)	-	-	92

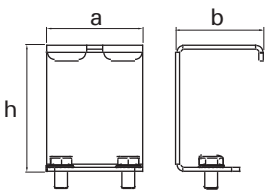
IP66 Lens



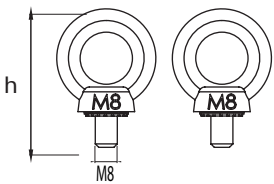
Busbar Hanger Set (SL / DL)



Cable Tray Hanger Set



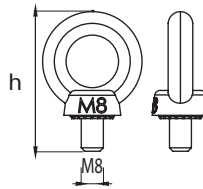
Double Eye Bolt Hanger Set



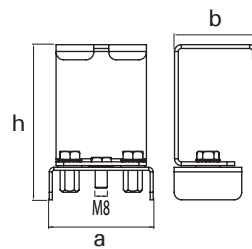
Optional Version With Terminal Box



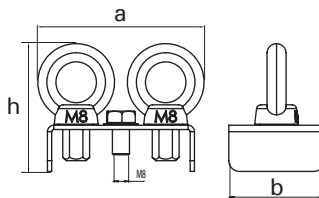
Single Eye Bolt Hanger Set



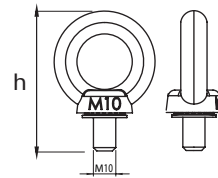
Cable Tray EMG Kit Hanger Set



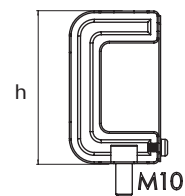
Double Eye Bolt Hanger Set for EMG Luminaires



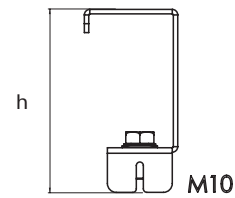
HBL IP65 Eye Bolt Hanger Set



HBL IP65 Busbar Hanger Set (SL / DL)



HBL IP65 Cable Tray Hanger Set

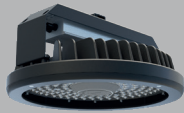
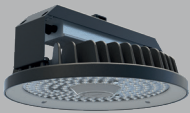




- Industry Areas
- Sports Halls
- Shopping Centers

Functional and efficient lighting

- ✓ High performance high-ceiling LED fixture
- ✓ IP66 protection & IK05 - IK10 impact resistance class
- ✓ Ambient operation temperature from -20°C to +60°C
- ✓ One-to-one exchange up 400W HIT
- ✓ Option for glass cover
- ✓ Various optics options
- ✓ Variable hanger set options according to using area
- ✓ Sensor option to provide smart lighting control
- ✓ Up to 3 hours emergency kit options / Different type driver options for smart lighting



HBC Lens

79 W – 220 W
9860 lm – 26980 lm

OPTIC
60° / 90°

HBC Lens + Glass

75 W – 220 W
8957 lm – 24600 lm

OPTIC
60° / 90°

HBC Lens + EMG Kit

79 W – 206 W
9860 lm – 25800 lm

OPTIC
60° / 90°

HBC Lens + Glass + EMG Kit

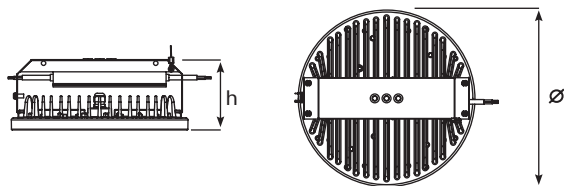
79 W – 155 W
8957 lm – 18616 lm

OPTIC
60° / 90°

The values specified above represent the minimum and maximum ranges for all variations of the product.

To access the technical specifications of the product that best suits your needs, please visit our website or contact our sales representative.

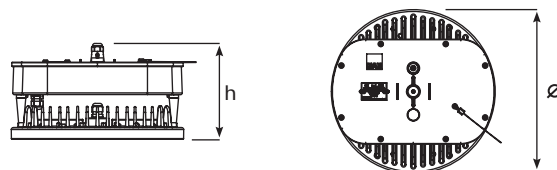
Technical Drawing | Lens



Dimensions (mm)

	Ø x h
Lens	315 x 127
Lens + EMG Kit Module	315 x 162

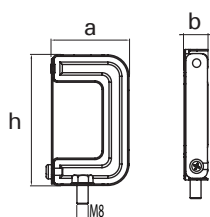
Technical Drawing | Lens + EMG Kit Module



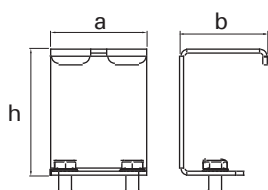
Weight (kg)

Lens	4,00
Lens + EMG Kit Module	6,00

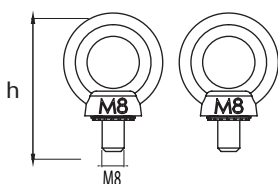
Busbar Hanger Set (SL / DL)



Cable Tray Hanger Set



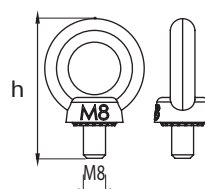
Double Eye Bolt Hanger Set



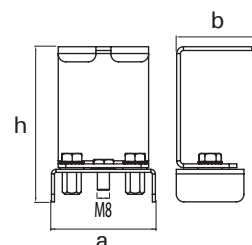
Dimensions (mm)

	a	b	h
Busbar Hanger Set (SL/DL)	55	17	92
Single Eye Bolt Hanger Set	-	-	50,5
Cable Tray Hanger Set	60	54,5	80
Cable Tray EMG Luminaire Hanger Set	69	54,5	103
Double Eye Bolt Hanger Set	-	-	50,5
Double Eye Bolt Hanger Set for EMG Luminaire	78	45	59,5

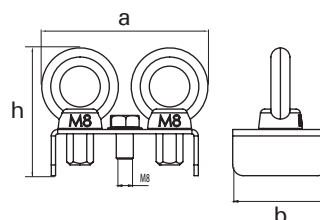
Single Eye Bolt Hanger Set



Cable Tray EMG Luminaire Hanger Set



Double Eye Bolt EMG Luminaire Hanger Set



VALERIA



- Open Spaces
- Ports
- Sports Halls
- Industrial Plants
- Parking Lots
- Advertising Boards
- Building Facades

-20°C +40°C



Perfect solution for lighting needs of large areas

- ✓ The ideal solution for outdoor lighting
- ✓ IP66 protection & IK08 impact resistance class
- ✓ Ambient operating temperature from -20°C to +40°C
- ✓ DALI control option



VALERIA

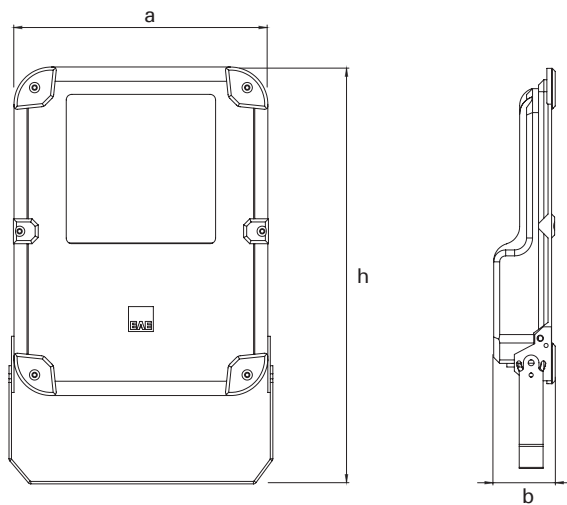
46 W – 292 W
5730 lm - 37938 lm

OPTIC
AS / 15° / 20° / 30° /
40° / 60° / 90°

The values specified above represent the minimum and maximum ranges for all variations of the product.

To access the technical specifications of the product that best suits your needs, please visit our website or contact our sales representative.

Technical Drawing



Weight (kg)

46W	1,65
100W	2,99
144W	4,35
193W	4,35
292W	6,85

Dimensions (mm)

	a	h	b
46W	320	205	47
100W	370	342	55
144W	400	320	55
193W	425	345	55
292W	485	395	65

PROLIT KOMPAKT

-30°C +55°C



- Logistics
- Shipyards
- Tanker Filling and Unloading Areas
- Oil Refineries
- Onshore Facilities
- Ship and Shipbuilding
- Aircraft Hangars

Compact lighting solution for many applications

- ✓ Efficient alternative to conventional lighting floodlights
- ✓ Ambient operating temperature from -30°C to +55°C
- ✓ IP66 protection & IK08 impact resistance class
- ✓ Save up to 53% or 70% energy with DALI control
- ✓ Special housing adaptations for Tunnel / Marine Prolit Tunnel / Prolit Ship.



PROLIT KOMPAKT V3 / NG / MP

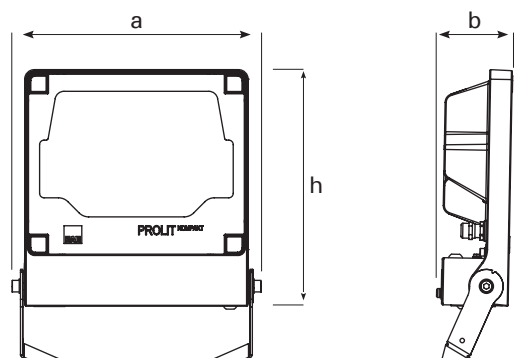
30 W – 124 W
4000 lm – 14400 lm

OPTIC
16° / 18° / 22° / 23° / 27° /
35° / 46° / 52° / 60° / 90° /
98° / 99° / AS /
Sport lens / 0 Tilt

The values specified above represent the minimum and maximum ranges for all variations of the product.

To access the technical specifications of the product that best suits your needs, please visit our website or contact our sales representative.

Technical Drawing



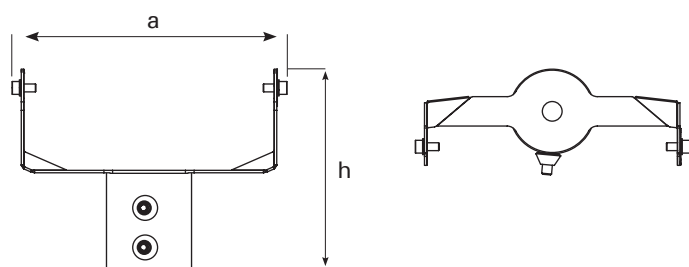
Dimensions (mm)

	a	b	h
Standard	276	76	330

Weight (kg)

Standard	3,60
----------	------

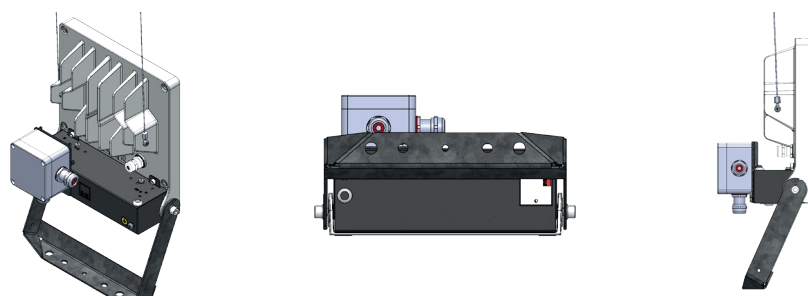
Pipe Fitting Hanger Set



Dimensions (mm)

	a	h
Pipe Fitting Hanger Set	277	205

Optional Version With Terminal Box



PROLIT



- Open Spaces
- Ports
- Sports Halls
- Industrial Plants
- Parking Lots
- Advertising Boards
- Building Facades

-30°C +60°C



Ultra-high performance luminaire for floodlight applications

- ✓ Ultra high power LED floodlight
- ✓ IP66 protection & IK09 impact resistance class
- ✓ Ambient operating temperature from -30°C to +60°C
- ✓ Excellent floodlight for 1:1 replacement up to 400 W HIT
- ✓ Energy savings of up to from 65% to 80%.
- ✓ Special housing adaptation for tunnel / ship applications
- ✓ DALI / DIMKO / 1-10V / RF control options



PROLIT NG / MP

94 W – 230 W
12494 lm – 28306 lm

OPTIC
10° / 99° / AS / Sport lens /
0 Tilt

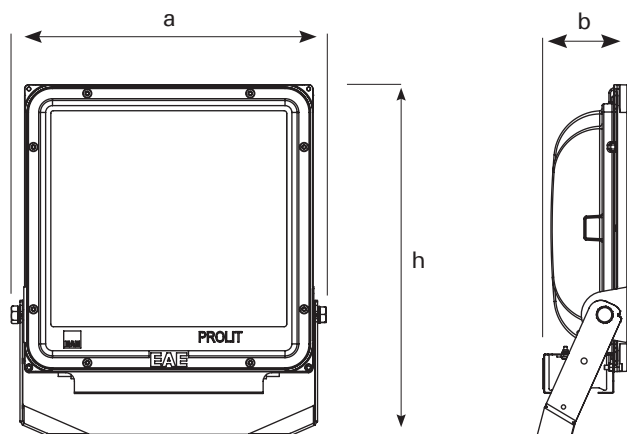


PROLIT SHIP

101 W – 206 W
13400 lm – 25800 lm

OPTIC
10° / 99° / AS / Sport lens /
0 Tilt

Technical Drawing



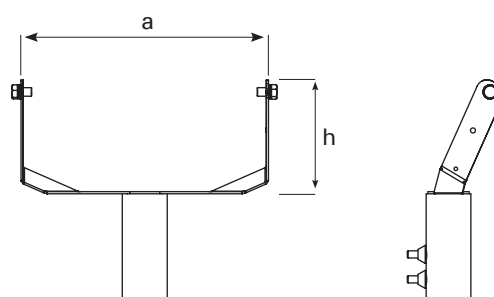
Dimensions (mm)

	a	b	h
Standard	336	95	412

Weight (kg)

Standard	7,10
----------	------

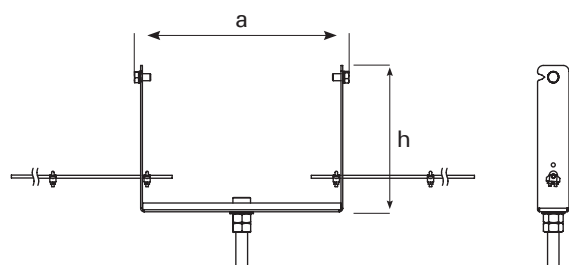
Pipe Fitting Hanger Set



Dimensions (mm)

	a	h
Pipe Fitting Hanger Set	345	310
Single Point Hanger Set	345	345

Single Point Hanger Set



PROLIT PLUS



- General Open Spaces
- Ports
- Sports Halls
- Industrial Plants
- Parking Lots
- Building Facades

-30°C +55°C



Lighting solution in large areas

- ✓ Special housing adaptation for Port / Apron / Tunnel
- ✓ IP66 protection & IK09 impact resistance class / Tempered screen printing glass
- ✓ Ambient operation temperature from -30°C to +55°C
- ✓ DALI / 1-10V / DIMKO / RF control options



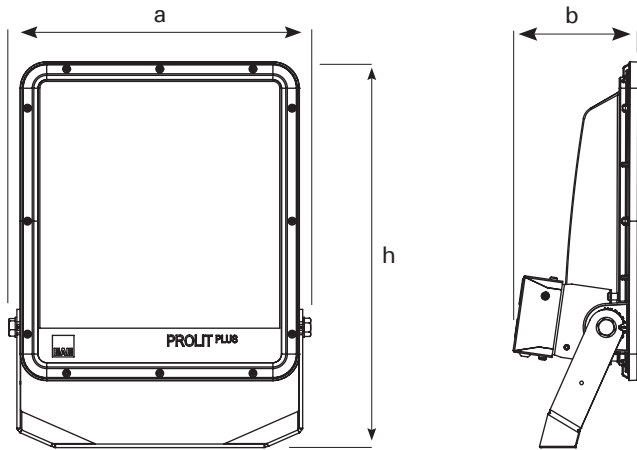
PROLIT PLUS

195 W – 435 W
25300 lm – 58706 lm

OPTIC

16° / 18° / 23° / 27° / 30° / 35° / 45° /
46° / 52° / 60° / 90° / 98° / AS /
Sport lens / 0 Tilt

Technical Drawing



Dimensions (mm)

	a	b	h
Standard	424	174	537



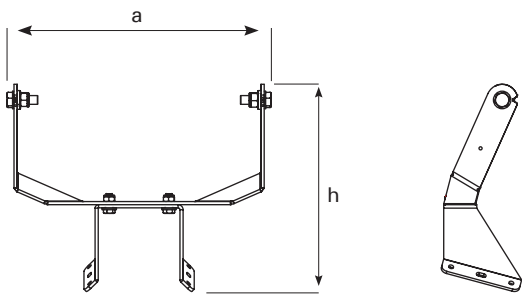
Weight (kg)

Standard	11,50
----------	-------

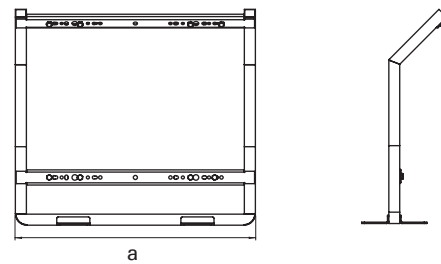
Dimensions (mm)

	a	b	h
Corner Hanger Set	422	-	331
Easy Assembly Bracket	399	-	-
4 Piece Single Angle Hanger Set	870	-	-
Adjustable Suspension Set 1x	-	-	286
Double Pipe Hanger Set	-	-	600
Vertical Pipe Hanger Set	220	-	160
Adjustable Suspension Set	690	78	-

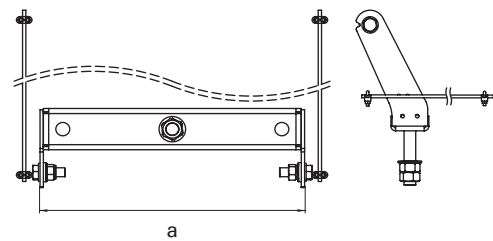
Corner Hanger Set



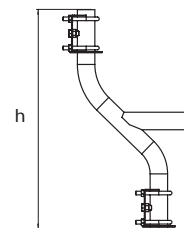
4 Piece Single Angle Hanger Set



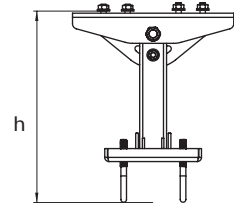
Easy Assembly Bracket



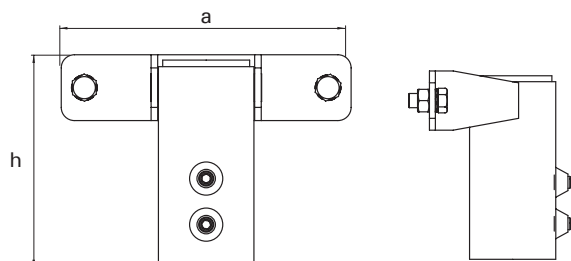
Double Pipe Hanger Set



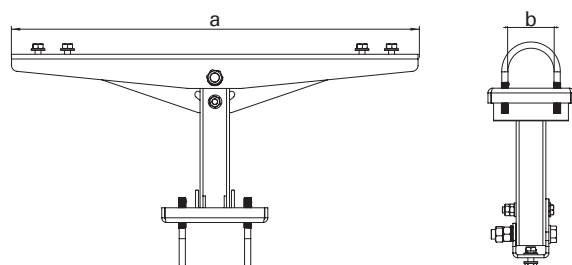
Adjustable Suspension Set 1x



Vertical Pipe Hanger Set



Adjustable Suspension Set



PROLIT

Plus Apron



■ Airports

-30°C +50°C



Designed for airport runways

- ✓ Metallized plastic reflector
- ✓ IP66 protection & IK10 impact resistance class
- ✓ Ambient operation temperature from -30°C to +50°C
- ✓ Asymmetric optics specially developed for airports
- ✓ DALI / 1-10V / DIMKO / RF control options



PROLIT Plus Apron Single

211 W – 354 W
24481 lm – 41391 lm

OPTIC
Special Lens for Apron Areas

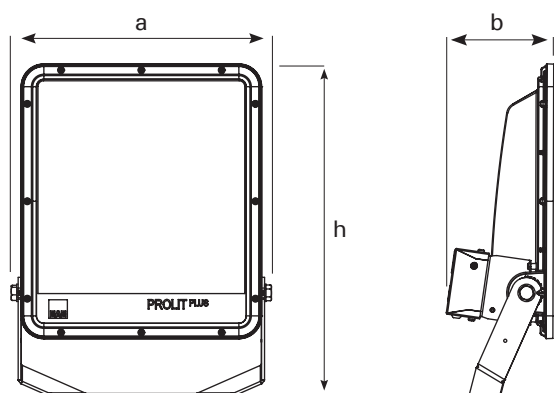


PROLIT Plus Apron Double

422 W – 708 W
49682 lm – 82782 lm

OPTIC
Special Lens for Apron Areas

Technical Drawing



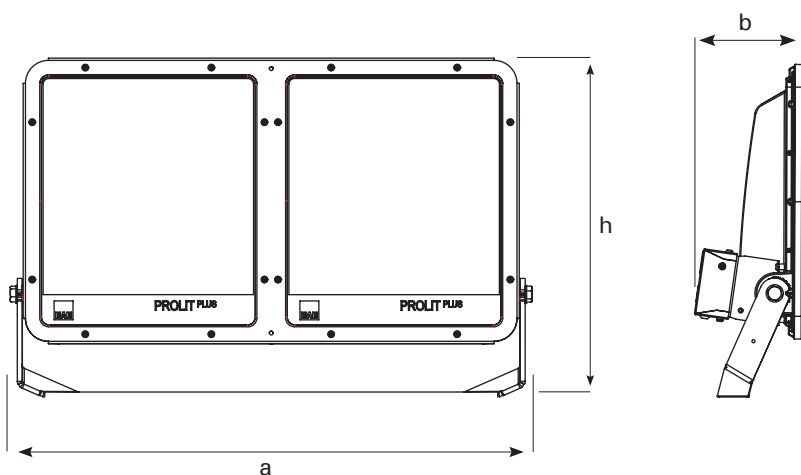
Dimensions (mm)

	a	b	h
Single	424	537	171
Double	824	525	173

Weight (kg)

Single	12,50
Double	25,00

Technical Drawing



PROLIT EFFECT

-30°C +55°C



- Shipyards
- Ports
- Ship and Shipbuilding
- Aircraft Hangars
- Square Lighting

The lightest and most efficient floodlight on the global market

- ✓ Durable facade and area luminaire
- ✓ IP66 protection & IK09 impact resistance class / Tempered and screen printed glass diffuser
- ✓ Ambient operating temperature from -30°C to +55°C
- ✓ DALI control option



PROLIT MP

436 W – 845 W
60000 lm – 99700 lm

OPTIC
18° / 23° / 30° / 46° / 60° /
90° / 0 Tilt



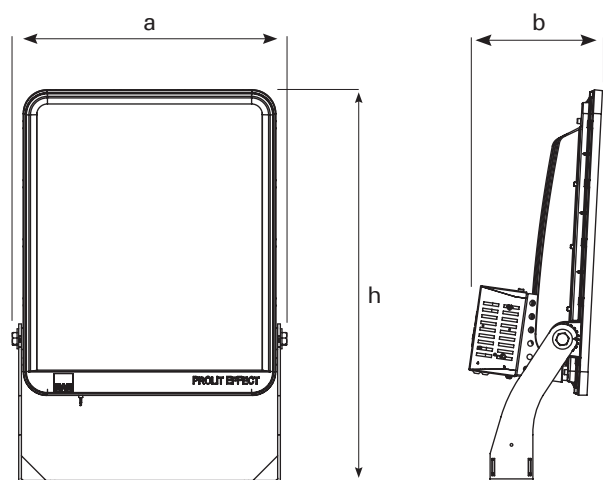
PROLIT NG

428 W – 753 W
56421 lm – 92305 lm

OPTIC
10° / 16° / 27° / 54° / 98° /
AS / 0 Tilt

*The values specified above represent the minimum and maximum ranges for all variations of the product.
To access the technical specifications of the product that best suits your needs, please visit our website or contact our sales representative.*

Technical Drawing



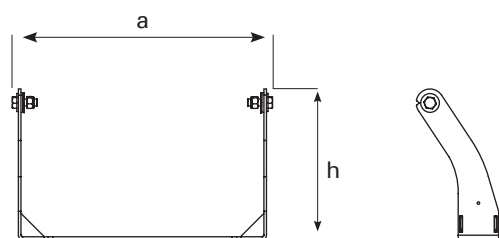
Dimensions (mm)

	a	b	h
Single	512	270	731

Weight (kg)

Standard	18,80
----------	-------

Hanger Set



Dimensions (mm)

	a	h
Hanger Set	295	487

MFL

-30°C +55°C



Extra innovative floodlight designed for marine applications

- Shipyards
- Ports
- Ship
- Passenger Ship Facades

- ✓ High-performance LED luminaire
- ✓ Special coating resistant to marine paints
- ✓ IP66 protection & IK10 impact resistance class
- ✓ Ambient operating temperature from -30°C to +55°C
- ✓ DALI control option



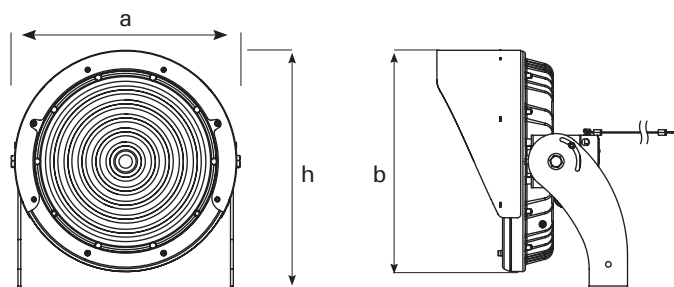
MFL

65 W – 164 W
9295 lm – 24364 lm

Mid Power LED

OPTIC
55° / 90°

Technical Drawing



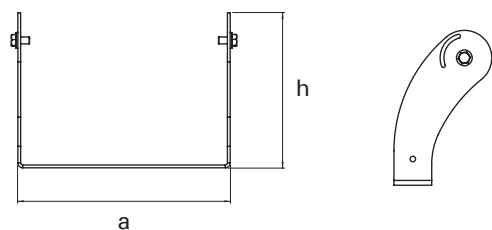
Dimensions (mm)

	a	b	h
Single	327	316	344

Weight (kg)

Standard	8,10
----------	------

Hanger Set



Dimensions (mm)

	a	h
Hanger Set	308	225

GPRONA



- Shipyard
- Ports
- Ship and Shipbuilding
- Aircraft Hangars
- Passenger Ship Facades

-25°C +50°C



The Best Choice of Asymmetric Viewpoint

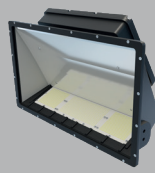
- ✓ LED luminaire, which is suitable for heavy industrial and port conditions
- ✓ IP66 protection & IK09 impact resistance class / Tempered glass
- ✓ Ambient operation temperature from -25°C to +50°C
- ✓ Perfect solution in the port sites with special asymmetric curve
- ✓ Multi-directional control and automation with DALI, RF, 1-10V and DIMKO options
- ✓ Suitable for special site solutions for special projects
- ✓ High strength against vibrations



GPRONA

135 W – 463 W
21440 lm – 74200 lm

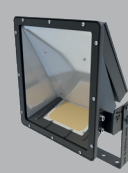
DALI / RF / 1-10V / DIMKO



GPRONA PLUS

558 W – 669 W
87538 lm – 102604 lm

DALI / RF / 1-10V / DIMKO

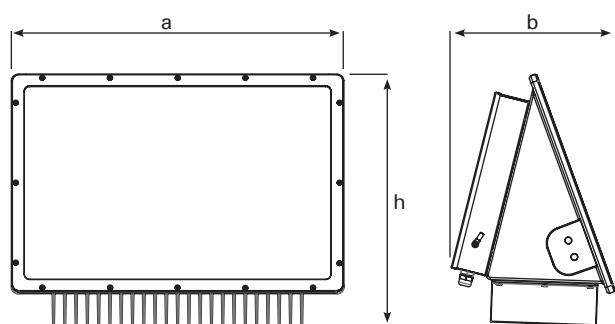


GPRONA MINI

133 W – 185 W
21800 lm – 29400 lm

DALI / RF / 1-10V / DIMKO

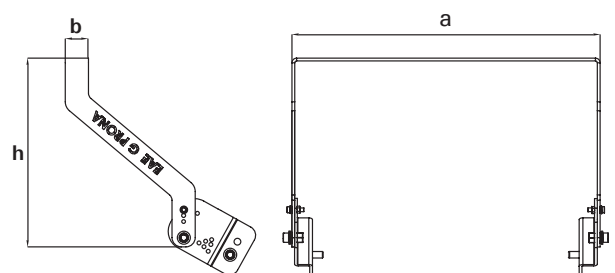
Technical Drawing



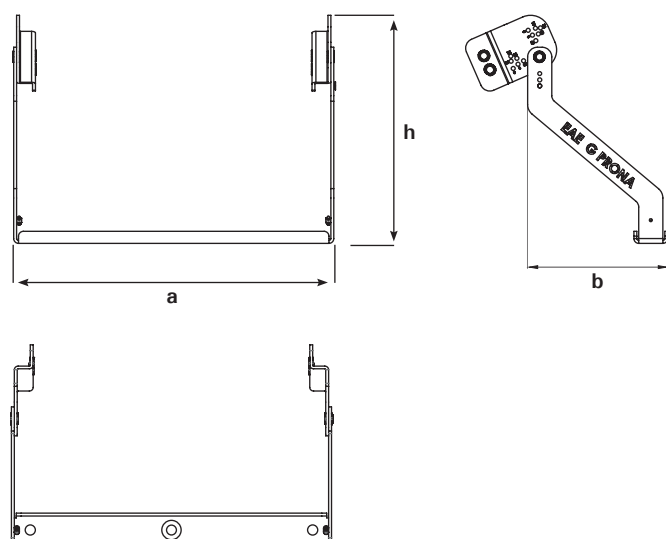
Weight (kg)

Gpron	22,00 - 31,50
Gpron Plus	33,50
Gpron Mini	11,80 - 12,30

Angular Hanger Set



Easy Assembly Hanger Set



Dimensions (mm)

	a	b	h
Gpron Standard Injection Box	589	296	508
Gpron Standard Luxeon Led	589	317	446
Gpron 10V + RF Injection Box	589	296	529
Gpron 10V + RF Luxeon Led	589	403	446
Gpron DALI + ZHAGA Injection Box	589	296	508
Gpron DALI + ZHAGA Luxeon Led	589	340	446

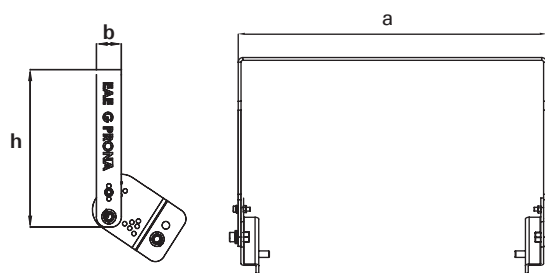
Dimensions (mm)

	a	b	h
Gpron Plus Standard	698	297	493
Gpron Plus 10V + RF	698	297	513
Gpron Plus DALI + ZHAGA	698	297	492

Dimensions (mm)

	a	b	h
Gpron Mini Standard	374	276	419
Gpron Mini 10V + RF	375	273	483
Gpron Mini DALI + ZHAGA	375	273	445

U Type Short Hanger Set

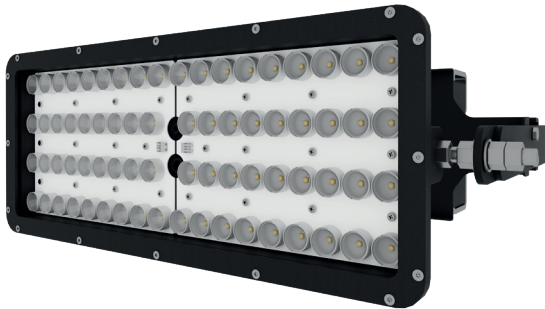


Dimensions (mm)

	a	b	h
Angular Hanger Set	662	50	406
U Type Short Hanger Set	662	50	306
Easy Assembly Hanger Set	662	290	472

SPRONA

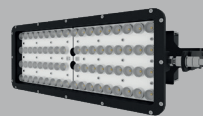
-25°C +45°C



- Shipyard
- Ports
- Ship and Shipbuilding
- Aircraft Hangars
- Passenger Ship Facades

Maximum performance for extreme conditions

- ✓ Aluminium housing with high mechanical strength
- ✓ IP66 protection & IK07 impact resistance class / Tempered transparent glass
- ✓ Ambient operating temperature from -25°C to +45°C
- ✓ Optimized, single, dual and triple modular use
- ✓ Functional use in the port and outdoor applications with special Hanger Set

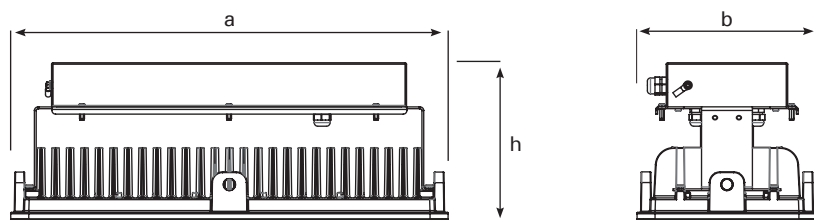


SPRONA

348 W
49527 lm – 51506 lm

OPTIC
20° / 35° / 60°

Technical Drawing



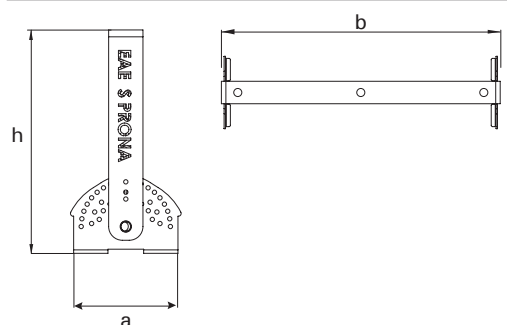
Dimensions (mm)

	a	b	h
Single Module	605	249	220
Double Module	605	615	220
Triple Module	605	980	220

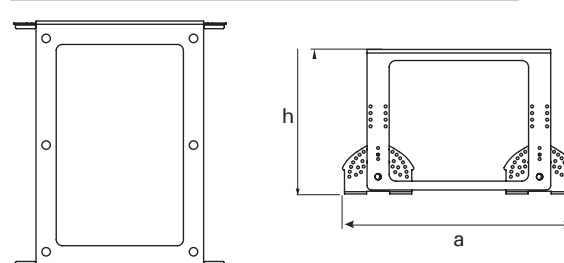
Weight (kg)

Single Module	15,40
Double Module	41,00
Triple Module	65,00

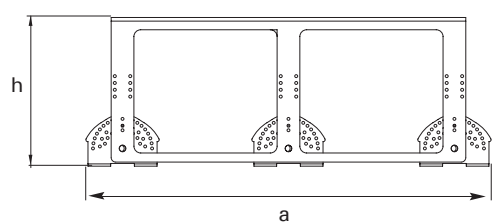
Single Hanger Set



Double Hanger Set



Triple Hanger Set



Dimensions (mm)

	a	b	h
Singer Hanger Set	249	616	345
Double Hanger Set	615	-	345
Triple Hanger Set	980	-	345

SPRONA PLUS



- Shipyard
- Ports
- Ship and Shipbuilding
- Aircraft Hangars

-25°C +50°C



Maximum performance in harsh conditions

- ✓ Aluminium housing with high mechanical strength
- ✓ IP66 protection & IK08 impact resistance class / Tempered transparent glass
- ✓ Ambient operating temperature from -25°C to +50°C
- ✓ Functional use in the port and outdoor applications with special hanger set



SPRONA PLUS

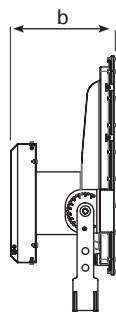
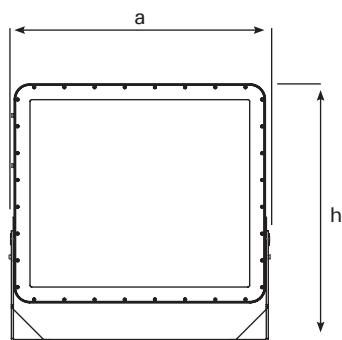
851 W – 1051 W
116026 lm – 149147 lm

OPTIC
10° / 22° / 57°

The values specified above represent the minimum and maximum ranges for all variations of the product.

To access the technical specifications of the product that best suits your needs, please visit our website or contact our sales representative.

Technical Drawing



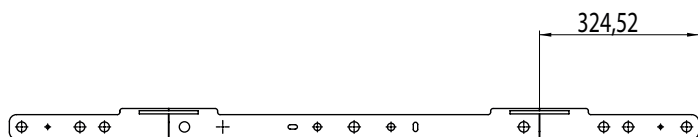
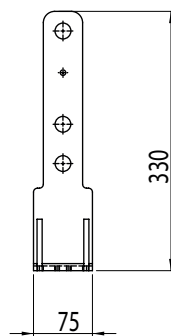
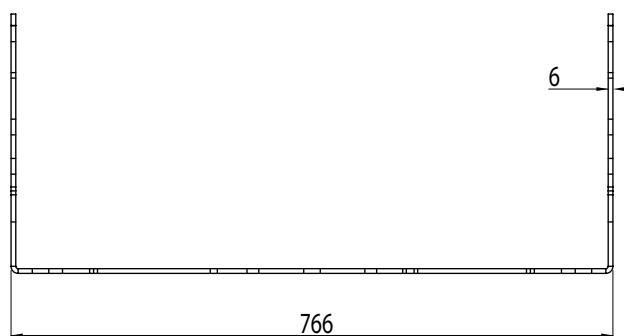
Dimensions (mm)

	a	b	h
Standard	805	228	768

Weight (kg)

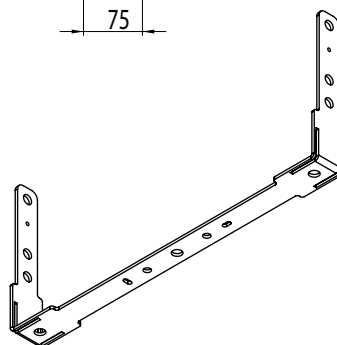
Standard	45,80
----------	-------

Hanger Set



UP 90° R3

UP 90° R3



KANOLED

-30°C +50°C



LED Luminaire for Fuel Stations

- ✓ Excellent performance for flammable and combustible areas
- ✓ IP65 protection & IK07 impact resistance class
- ✓ Ambient operating temperature from -30°C to +50°C (IP65)
- ✓ One-to-one exchange up 250W HIT

- Oil Refineries
- Tanker Filling and Unloading Areas



KANOLED V.3 IP65

46 W – 133 W
6600 lm - 15310 lm

Tempered Glass - Glazed Glass

OPTIC
Wide Angle / 115°

Wiring Option

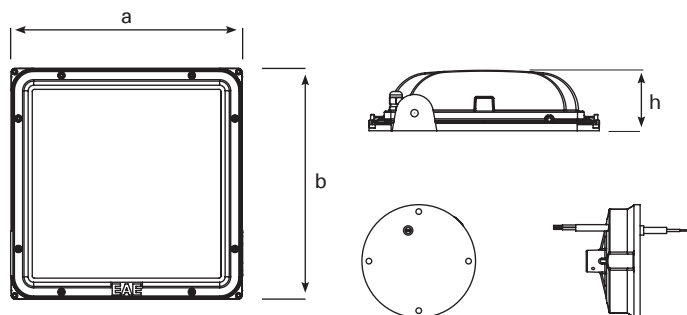


KANOLED V.3 HE

60 W – 100 W
9700 lm - 14415 lm

Transparent Glass

Technical Drawing IP65



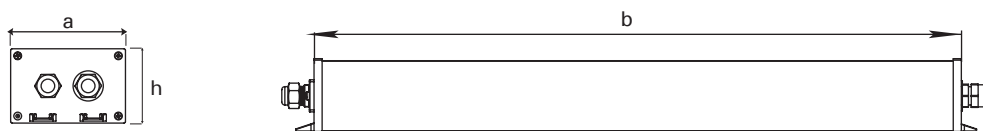
Dimensions (mm)

	a	b	h
Standard IP65	336	336	89

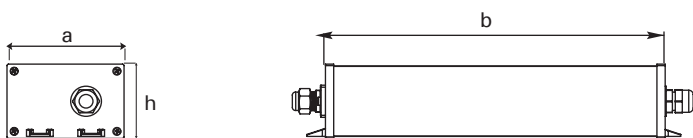
Weight (kg)

Standard	5,00
----------	------

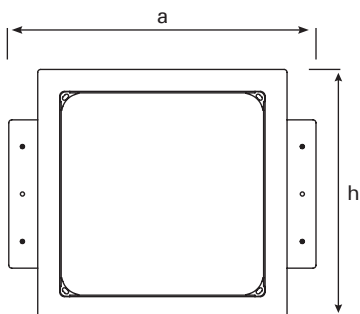
External EMG Kit Box Standard



External EMG Kit Box DALI



U Hanger Set



Dimensions (mm)

	a	b	h
External ACK Box	114	673	74
External ACK Box DALI	114	363	74
Metal Hanger Set	517,5	92,5	420

RA / RA2 / RA3 / RA CLASS II

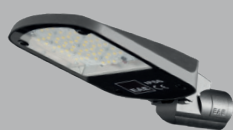
-40°C +60°C



- City and Residential Streets
- Bridges
- Bicycle and Pedestrian Paths
- Squares
- Parking Lots
- Perimeter Lighting
- Roads and Highways

Powerful street and road lighting

- ✓ Powerful LED mast top luminaire
- ✓ IP66 protection & IK09 impact resistance class
- ✓ Ambient operating temperature from -40°C to +60°C
- ✓ Optional insulation protect class (Class I & Class II)
- ✓ Intelligent lighting control system via DIMKO, NEMA, Zhaga and RF



RA

25 W – 58 W
3558 lm – 7962 lm

OPTIC

100° / 110° / Wide Angle / Extra Wide Angle

RF Wireless and DALI /1-10V
Dimko / Nema / Zhaga
control options



RA 2

30 W – 116 W
3637 lm – 16906 lm

OPTIC

100° / 110° / Wide Angle / Extra Wide Angle

RF Wireless and DALI /1-10V
Dimko / Nema / Zhaga
control options



RA 3

103 W – 218 W
15300 lm – 27700 lm

OPTIC

100° / 110° / Wide Angle / Extra Wide Angle

RF Wireless and DALI /1-10V
Dimko / Nema / Zhaga
control options



RA CLASS II

30 W – 46 W
4300 lm – 6580 lm

OPTIC

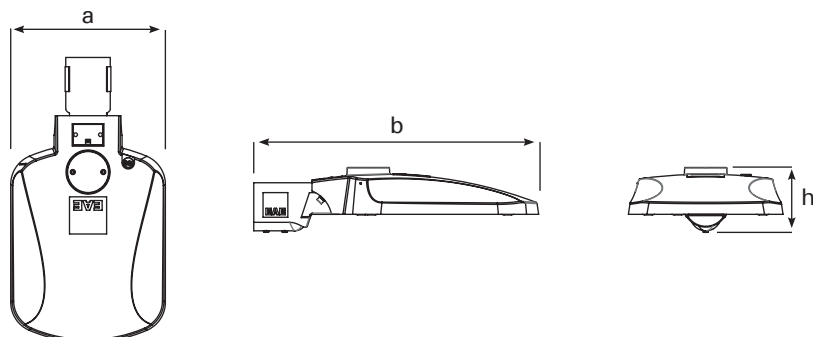
100° / 110° / Wide Angle / Extra Wide Angle

RF Wireless and DALI /1-10V
Dimko / Nema / Zhaga
control options

The values specified above represent the minimum and maximum ranges for all variations of the product.

To access the technical specifications of the product that best suits your needs, please visit our website or contact our sales representative.

Technical Drawing



Dimensions (mm)

	a	b	h
Ra	250	460	105
Ra2	310	639	104
Ra3	310	705	104
Ra Class II	460	250	68

Weight (kg)

Ra	3,40
Ra2	6,70
Ra3	8,30
Ra Class II	3,30

HORUS 1-2

-20°C +35°C



- Street and Environment
- Ports
- Highways
- Shipyards
- Open Spaces
- Urban Areas

Modern, highly efficient street and perimeter lighting

- ✓ Highly durable LED luminaire for street lighting
- ✓ High mechanical resistance housing with IP66 and IK08 resistance and tempered transparent glass
- ✓ -20°C / +35°C ambient operating temperature
- ✓ DALI /1-10V + Dimko options
- ✓ Driver and led intervention sections separated



HORUS-1

79 W – 123 W
10200 lm – 13500 lm

Mid Power LED

OPTIC
100°



HORUS-2

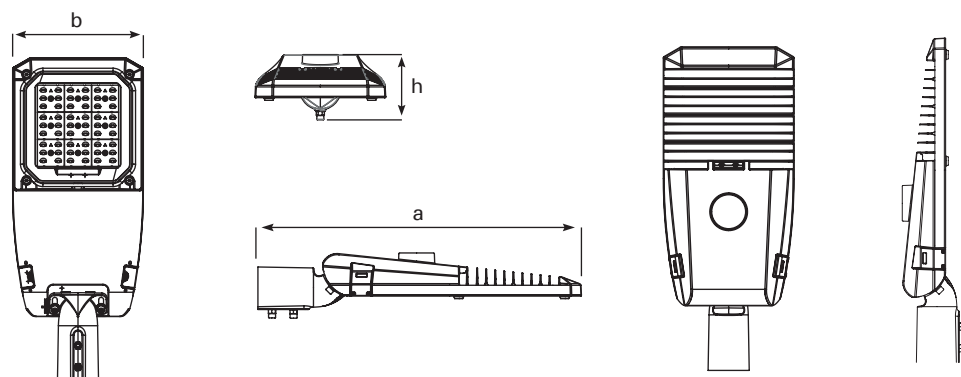
117 W – 195 W
15700 lm – 23044 lm

Mid Power LED

OPTIC
100°

*The values specified above represent the minimum and maximum ranges for all variations of the product.
To access the technical specifications of the product that best suits your needs, please visit our website or contact our sales representative.*

Technical Drawing



Dimensions (mm)

	a	b	h
Horus 1	601	243	120
Horus 2	721	313	120

Weight (kg)

Horus 1	3,50
Horus 2	5,10

OSIRIS

-20°C +40°C



- Street and Environment
- Ports
- Highways
- Shipyards
- Open Spaces
- Urban Areas

High performance street luminaire

- ✓ Luminaire suitable for M1 and all other road classes
- ✓ IP66 protection & IK09 impact resistance class / Tempered transparent glass
- ✓ Ambient operating temperature from -20°C to +40°C
- ✓ Quick and easy installation
- ✓ High energy savings
- ✓ DALI control option
- ✓ Clamshell driver for easy replacement

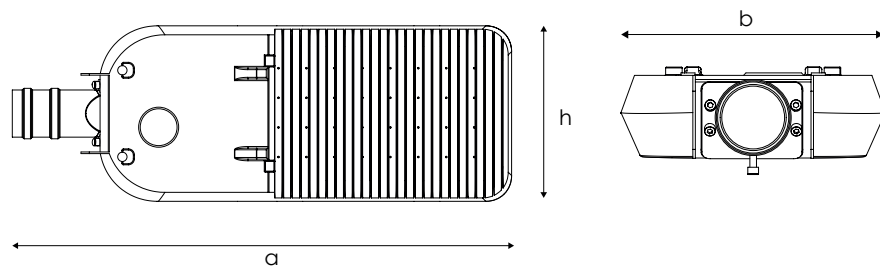


OSIRIS

237 W – 375 W
30430 lm – 48352 lm

OPTIC
Mid Power LED
100°

Technical Drawing



Dimensions (mm)

	a	b	h
Standard	910	320	112

Weight (kg)

Standard	10,50
----------	-------

ARKTOS

NG V2

-40°C +50°C



- Street and Environment
- Ports
- Highways
- Shipyards
- Open Spaces
- Urban Areas

Perimeter lighting with excellent performance

- ✓ Streetlight LED luminaire
- ✓ Aluminium injection monobloc housing
- ✓ Ambient operating temperature from -40°C to +50°C
- ✓ IP66 protection & IK09 impact resistance class / Tempered transparent glass
- ✓ High energy saving and long lasting use
- ✓ Environmentally friendly lighting with zero mercury



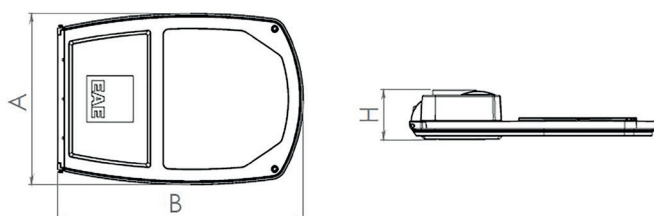
ARKTOS

55 W – 142 W
7100 lm – 15656 lm

Mid Power LED

OPTIC
110°

Technical Drawing



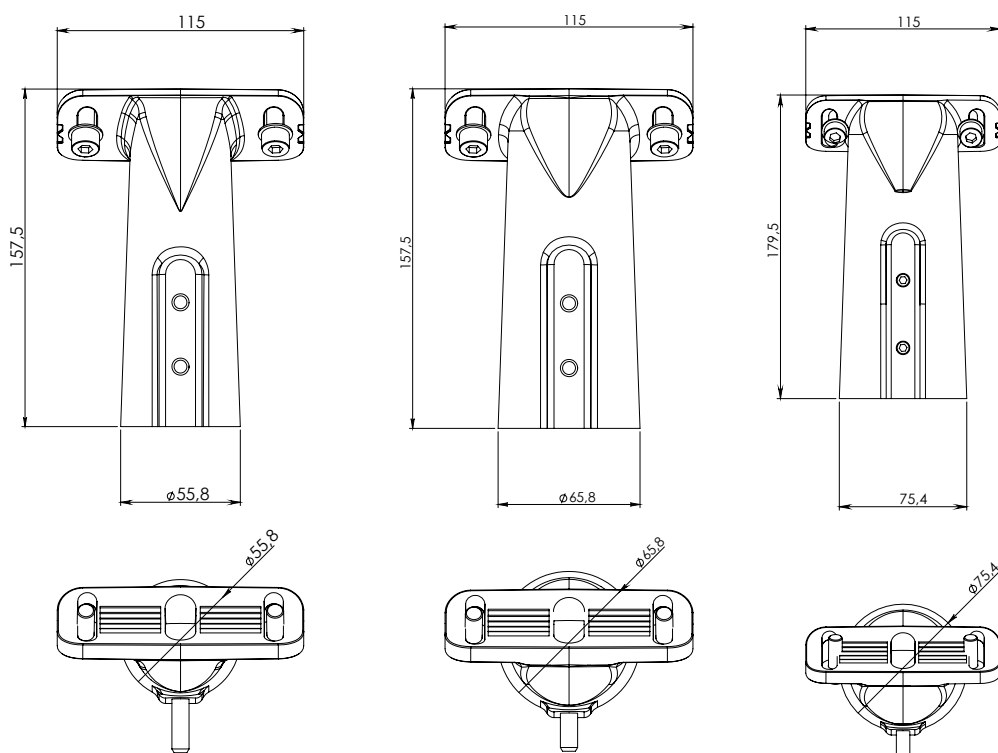
Dimensions (mm)

	a	b	h
Standard	330	475	92,5

Weight (kg)

Standard	6,00
----------	------

Hanger Set

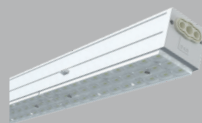




- Logistics
- Data Centers
- Textile
- Retail and Presentation
- Office and Communication
- Education and Science
- Art & Culturer

Endless applications for the perfect lighting experience

- ✓ LED linear duct system: Energy transmission, lighting control and more... All in one solution.
- ✓ IP20 - IP40 - IP64 protection & IK02 impact resistance class
- ✓ Ambient operating temperature from -20°C to +50°C
- ✓ Simple, fast and tool-free installation
- ✓ UGR < 19 option
- ✓ Number of conductors from 5 to 11
- ✓ Aluminium housing

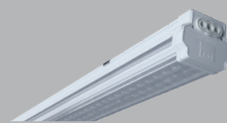


INFINOO IP20 / IP40

20 W – 197 W
3200 lm – 25583 lm

OPTIC

30° / 60° / 90° / Asymmetric /
Double Asymmetric

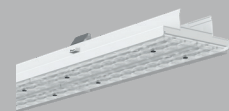


INFINOO IP64

20 W – 197 W
3200 lm – 25583 lm

OPTIC

30° / 60° / 90° / Asymmetric /
Double Asymmetric



INFINOO DUO

93 W – 192 W
15744 lm – 27709 lm

OPTIC

30° / 60° / 90° / Asymmetric /
Double Asymmetric

The values specified above represent the minimum and maximum ranges for all variations of the product.

To access the technical specifications of the product that best suits your needs, please visit our website or contact our sales representative.



INFINOO UGR19

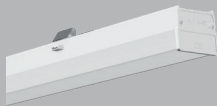
is ideal for offices, schools, and meeting rooms. Equipped with state-of-the-art LED technology, this luminaire delivers the best features of linear lighting systems, offering energy efficiency, long-lasting performance, and an eco-friendly, economical solution.

Designed with a UGR value below 19, it minimizes glare for superior visual comfort. With both surface and suspended mounting options, it easily adapts to various architectural and aesthetic requirements, empowering designers and architects to create versatile lighting solutions.

INFINOO UGR19

21 W – 43 W
3000 lm – 6733 lm

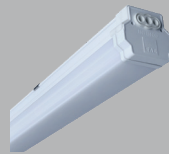
OPTIC
70°



INFINOO OPAL IP20 & IP40

36 W – 98 W
4439 lm – 11156 lm

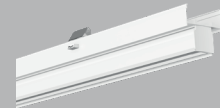
Opal Diffuser



INFINOO OPAL IP64

25 W – 106 W
2800 lm – 12051 lm

Opal Diffuser



INFINOO TRACK

Three Phase Track Rail for
INFINOOLINE



INFINOO SENSOR

Sensor unit
compatible with INIFINOOLINE
channel duct



INFINOO EXIT

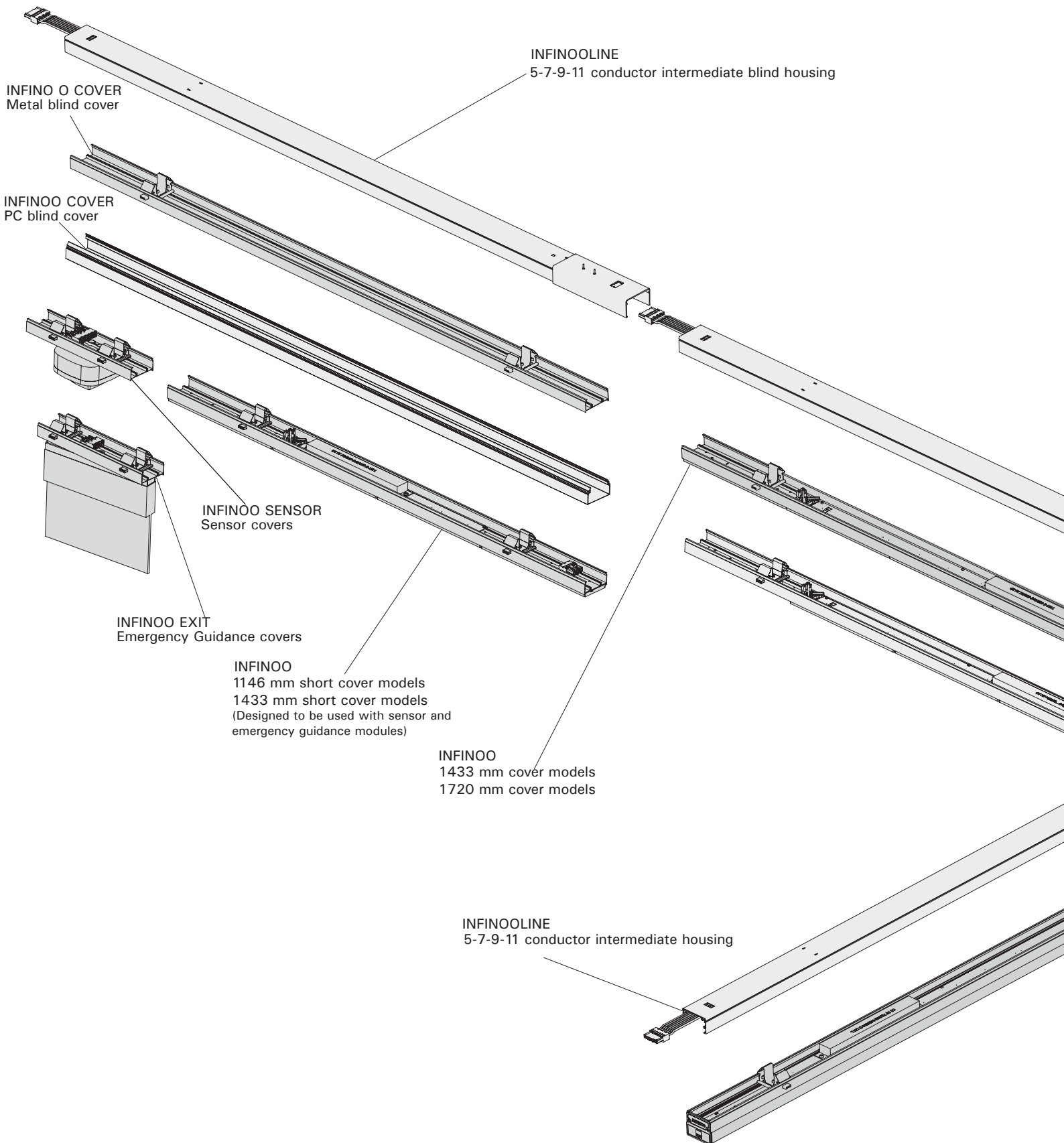
Emergency guidance unit
Suitable for INIFINOOLINE
channel duct



INFINOO COVER

Compatible with
metal or PC covers
INFINOO channel duct.

INFINOO



INFINO O COVER
Metal blind cover

INFINOO COVER
PC blind cover

INFINOO SENSOR
Sensor covers

INFINOO EXIT
Emergency Guidance covers

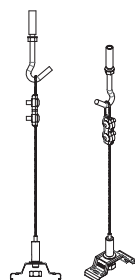
INFINOO
1146 mm short cover models
1433 mm short cover models
(Designed to be used with sensor and
emergency guidance modules)

INFINOO
1433 mm cover models
1720 mm cover models

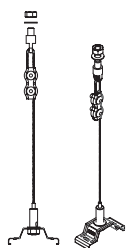
INFINOOLINE
5-7-9-11 conductor intermediate blind housing

INFINOOLINE
5-7-9-11 conductor intermediate housing

Hanger Set



STEEL FIBRE-REINFORCED CONCRETE SUSPENSION SET



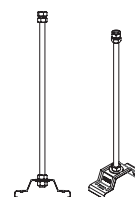
STEEL FIBRE-CABLE TRAY SUSPENSION SET



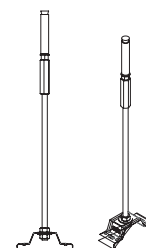
CHAIN CONCRETE SUSPENSION SET



CHAIN CONCRETE CABLE TRAY SUSPENSION SET



ROD-WIRE CABLE TRAY SUSPENSION SET



ROD-CONCRETE SUSPENSION SET



SUPPORT SPRING CABLE TRAY INSTALLATION TOOL



SUPPORT SPRING CONCRETE INSTALLATION TOOL

INFINOOLINE
5-7-9-11 conductive
intermediate housing

INFINO RAY
Three-phase track 1433mm cover models
Three-phase track 1720mm cover models

X turning

T turning

L turning

INFINO DUO

M-LINE

-20°C +40°C



- Logistics
- Education and Science
- Complex
- Shops and Markets
- Office and Administrative Buildings

Cost-effective alternative for endless lighting applications

- ✓ High performance surface-mounted modular lighting LED luminaire
- ✓ IP40 protection & IK02 impact resistance class
- ✓ Ambient operating temperature from -20°C to +40°C
- ✓ Opal diffusor option
- ✓ Surface-mounted modular lighting
- ✓ Different housing sizes according to the area of use
- ✓ Up to 3 hours emergency kit options / Different type driver options for smart lighting



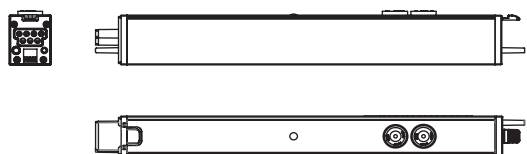
M-LINE

11 W – 75 W
1540 lm – 10240 lm

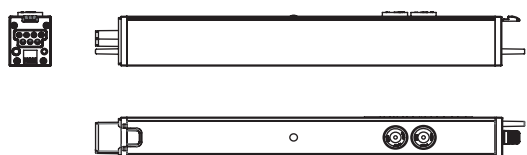
OPTIC

30° / 60° / 90° /
Double Asymmetric / Batwing

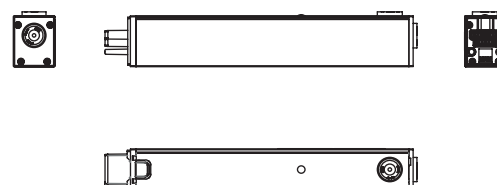
Technical Drawing



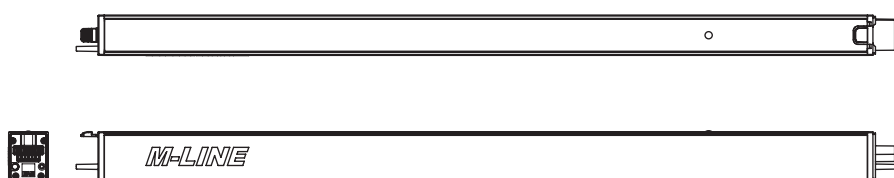
Central Feeder Box Module



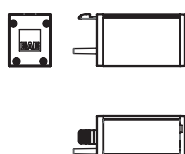
Starting Feeder Module



Intermediate Module



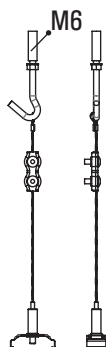
End Closer Module



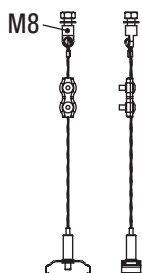
Weight (kg) (short height)

Single Module	1,25
Blank Module	0,90
Intermediate Module	1,35
Center Feed Module	0,46
Feeder Module	0,35
Termination Module	0,10

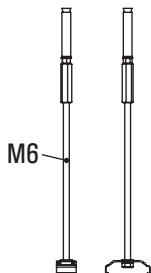
Support Kits



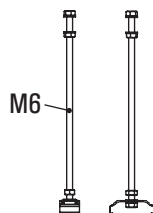
STEEL WIRE-CONCRETE
SUSPENSION SET



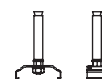
STEEL TRAY
SUSPENSION SET



TIJI
SUSPENSION SET



TIJI-CONCRETE
SUSPENSION SET



CONCRETE
SUSPENSION SET



TRAY
SUSPENSION SET

GALIS MEGA

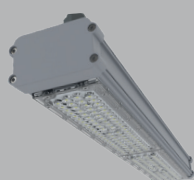
-25°C +40°C



- Logistic Plants
- Education and Science Buildings
- Mixed Buildings
- Shops and Markets
- Office and Administrative Buildings

The ideal solution for flexible use

- ✓ High performance etange LED lighting fixture
- ✓ Maximum energy saving
- ✓ IP65 protection & IK09 impact resistance class / Aluminum extruded housing
- ✓ Ambient operating temperature from -25°C to +40°C
- ✓ Flexible mounting with movable mounting spring
- ✓ Quick and easy electrical connection with cable gland
- ✓ Up to 3 hours emergency kit option / DALI control
- ✓ Normal and Through-Wiring cabling options



GALIS Mega

25 W – 130 W
3500 lm – 18800 lm

OPTIC
15° / 25° / 40° / 60° / 90° /
Asymmetric Lens



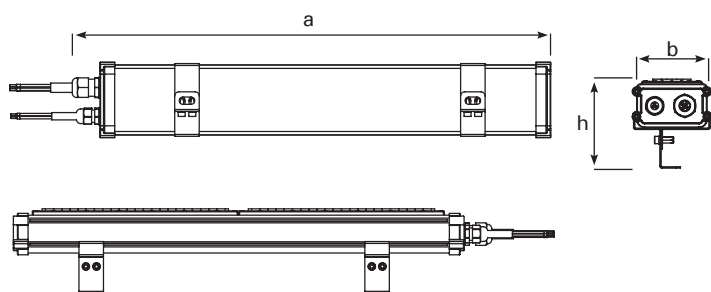
GALIS Mega - Tempered Glass + Lens

25 W – 130 W
3500 lm – 18800 lm

OPTIC
15° / 25° / 40° / 60° / 90°

*The values specified above represent the minimum and maximum ranges for all variations of the product.
To access the technical specifications of the product that best suits your needs, please visit our website or contact our sales representative.*

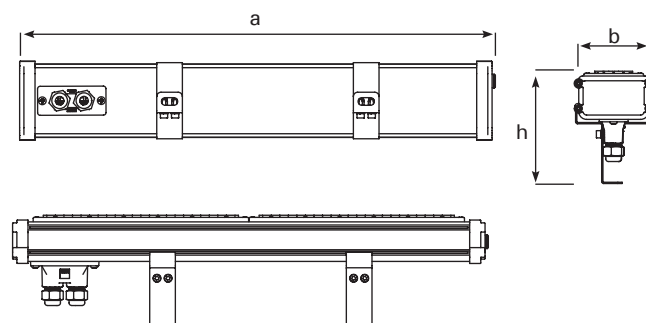
Technical Drawing | Feeding From Side



Dimensions (mm)

	a	b	h
Galis Mega Feeding From Side	585	93	107
Galis Mega Feeding From Top	550	93	132

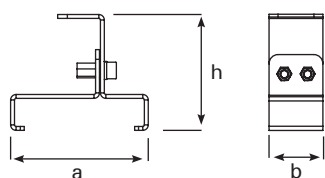
Technical Drawing | Feeding From Top



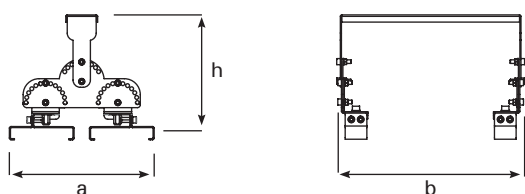
Weight (kg)

Standard	1,70
Standard EMG Kit	2,00
DALI + EMG Kit	2,00

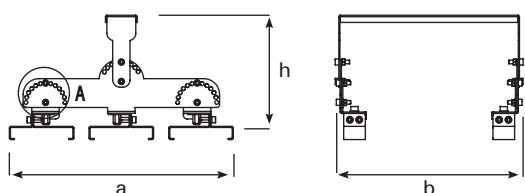
Fixed Hanger Set



Angular Double Hanger Set

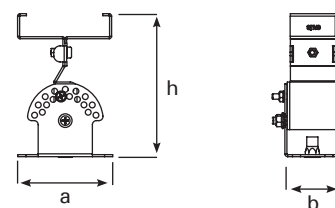


Angular Triple Hanger Set

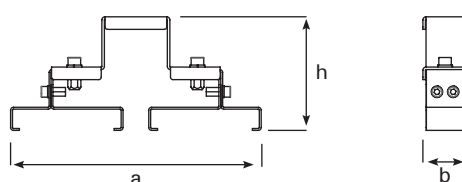


Angular Hanger Set

(Standard or Stainless Steel Version)



Double Hanger Set



Dimensions (mm)

	a	b	h
Fixed Hanger Set	89	30	63
Angular Hanger Set	90	41	105
Angular Double Hanger Set	200	243	172
Double Hanger Set	199	36	90
Angular Triple Hanger Set	309	250	154

GALIS

NG / MINI NG

-20°C +40°C



- Parking Lots
- Warehouses
- Wet and Humid Environments

Maximum performance for extreme conditions

- ✓ High performance waterproof LED luminaire designed for durability and energy efficiency.
- ✓ Rugged aluminum extruded housing with IP66 protection and IK08 impact resistance.
- ✓ Operates reliably in ambient temperatures from -20°C to +40°C.
- ✓ Suitable for surface mounted, ensuring versatile installation options.
- ✓ Quick and easy electrical connection for efficient setup.



GALIS NG

18 W – 77 W
2298 lm – 9230 lm

OPTIC
Transparent Glass

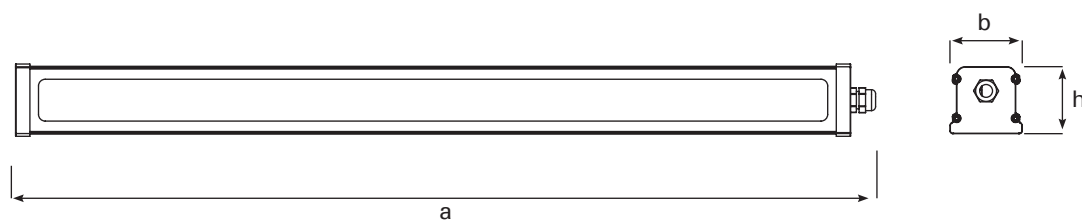


GALIS MINI NG

10 W – 48 W
1000 lm – 5700 lm

OPTIC
Şeffaf Cam

Technical Drawing



Dimensions (mm) - Galis NG

	a	b	h
53 CM	532	76	70,5
85 CM	852	76	70,5
125 CM	1252	76	70,5
149 CM	1492	76	70,5

Weight (kg)

53 CM	1,30
85 CM	2,07
125 CM	2,92
149 CM	3,65

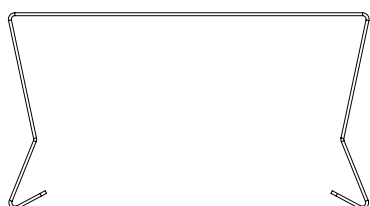
Dimensions (mm) - Galis Mini NG

	a	b	h
53 CM	535	62	62
100 CM	1015	62	62
125 CM	1250	62	62
149 CM	1495	62	62

Weight (kg)

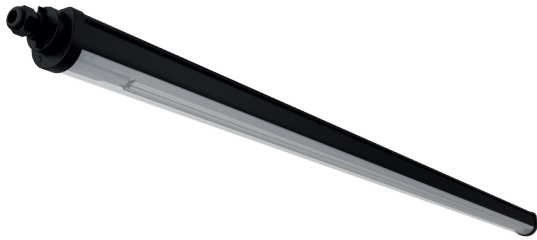
53 CM	2,00
100 CM	2,60
125 CM	3,10
149 CM	3,60

Hanger Spring Set



YPB
NG

-20°C +45°C



- Logistics
- Data Centers
- Textile
- Retail and Presentation
- Office and Communication
- Education and Science
- Art & Culture

Solution-oriented, High efficiency lighting

- ✓ Extrusion plastic housing
- ✓ IP65 protection & IK09 impact resistance class / Opal PC diffuser
- ✓ Ambient operating temperature from -20°C to +45°C
- ✓ Different type driver and sensor options for smart lighting / Normal and Through-Wiring options
- ✓ Easy to install and maintain design with advanced features
- ✓ Fewer light lines required with its special optic design for parking garages

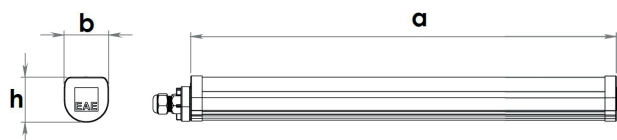


YPB
NG

24 W – 44 W
3407 lm – 6072 lm

Batwing

Technical Drawing



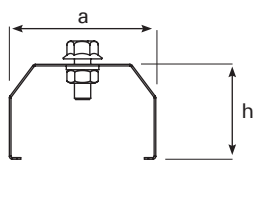
Dimensions (mm)

	a	b	h
90 CM	893	57	57
120 CM	1175	57	57
150 CM	1580	57	57

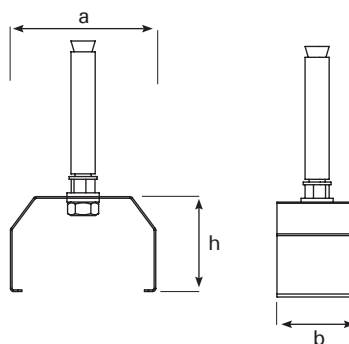
Weight (kg)

90 CM	1,00
120 CM	1,30
150 CM	1,70

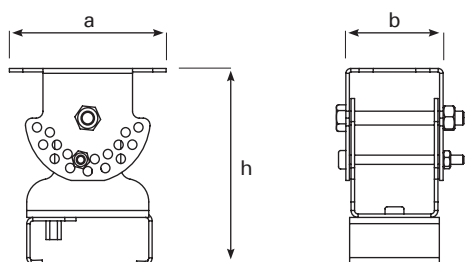
Fixed Hanger Set



Double Concrete Support Mounting Set



Angular Hanger Set Wall Mounted



Dimensions (mm)

	a	b	h
Fixed Hanger Set	54	30	35
Double Concrete Support Mounting Set	54	30	35
Angular Hanger Set Wall Mounted	70	41	85

LINA NG

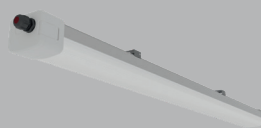
-20°C +40°C



- Logistics
- Machinery and Electronics
- Data Centers
- Technical Rooms
- Canopy Installations
- Multi-storey Car Parks
- Cold Air Storages

Easy installation and connection with custom design

- ✓ High performance LED luminaire
- ✓ IP66 protection & IK07 impact resistance class / Aluminum extrusion housing
- ✓ Ambient operation temperature from -20°C to +40°C
Easy installation and connection
- ✓ Eye-friendly opal diffuser
- ✓ Easy assembly feature
- ✓ Various light angle options
- ✓ Normal and Through-Wiring Options
- ✓ Up to 3 hours emergency kit options / Different type driver options for smart lighting

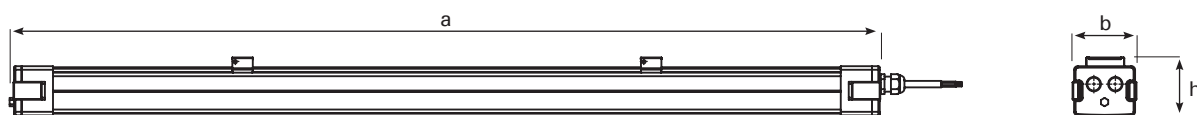


LINA NG

25 W – 84 W
2800 lm – 8900 lm

OPTIC
Opal Diffuser

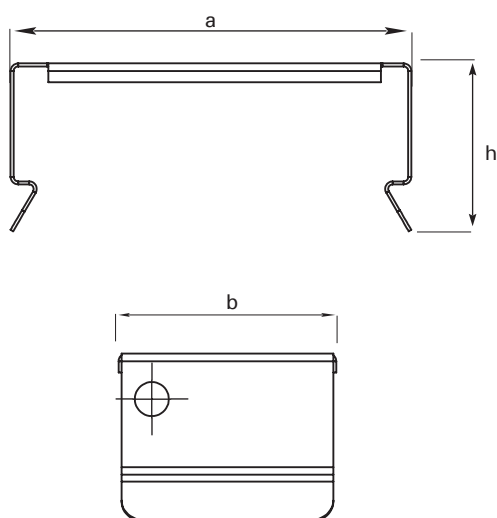
Technical Drawing



Dimensions (mm)

	a	b	h
60 CM	598	85	69
90 CM	898	85	69
120 CM	1198	85	69
150 CM	1498	85	69

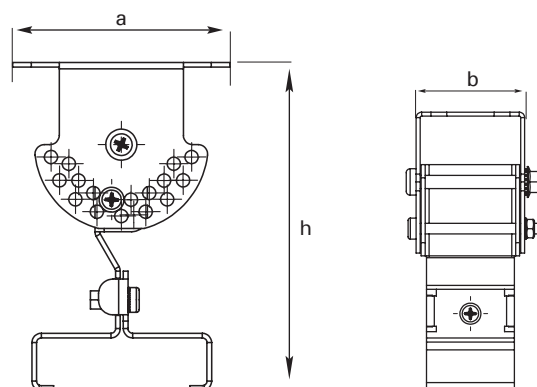
Fixed Hanger Set



Dimensions (mm)

	a	b	h
Fixed Hanger Set	53	29	22,2
Angular Hanger Set	70	41,2	105,5

Angular Hanger Set



TORNADO

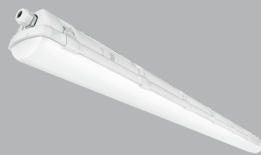
-20°C +40°C



Durable, efficient and comfortable lighting

- ✓ High protected LED luminaire
- ✓ IP66 protection & IK08 impact resistance class
- ✓ Ambient operating temperature from -20°C to +40°C
- ✓ Up to 3 Hours emergency kit options / DALI Control

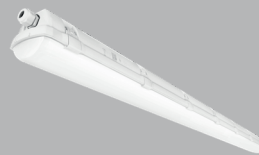
- Industrial Plants
- Aviation and Airports
- Mixed Buildings
- Logistics
- Metro & Rail Systems
- Sports Halls



TORNADO

24 W – 80 W
3227 lm - 10417 lm

OPTIC
Opal Diffuser

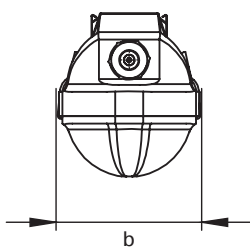
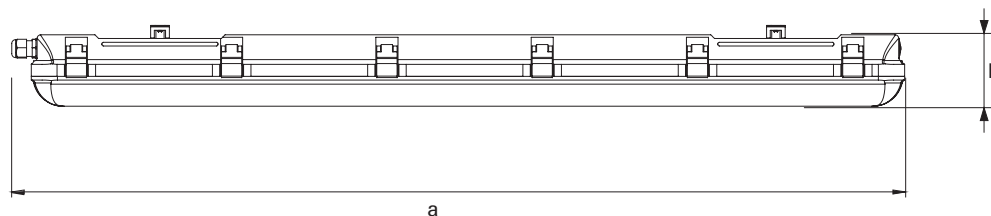


TORNADO HE

10 W – 80 W
1781 lm - 12295 lm

OPTIC
Opal Diffuser

Technical Drawing



Dimensions (mm)

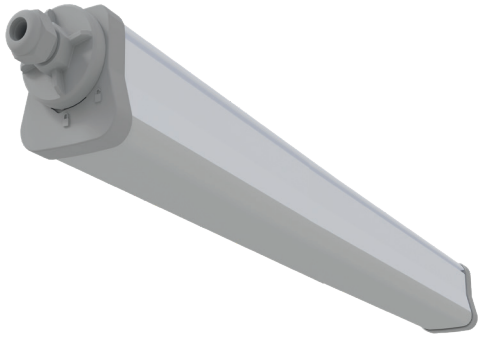
	a	b	h
60 CM	600	98	84
120 CM	1175	98	84
150 CM	1455	98	84

Weight (kg)

60 CM	0,80
120 CM	1,95
150 CM	2,20

COZAR

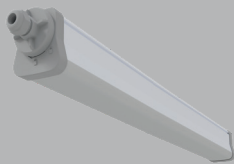
-20°C +40°C



- Industrial Plants
- Aviation and Airports
- Mixed Buildings
- Logistics
- Metro & Rail Systems
- Sports Halls

Economical lighting solution for humid areas

- ✓ IP65 - IP66 protection & IK09 impact resistance class / Plastic extruded housing
- ✓ Ambient operating temperature from -20°C to +40°C
- ✓ Up to 3 Hours emergency kit options / DALI Control
- ✓ Normal and Through-Wiring options
- ✓ Easy assembly feature



COZAR IP65 PLUS

19 W – 75 W
2079 lm – 8347 lm

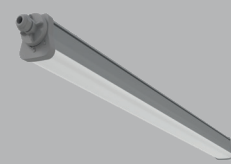
Opal Diffuser



COZAR IP66

19 W – 75 W
2079 lm – 8347 lm

Opal Diffuser



COZAR PLUS BPL

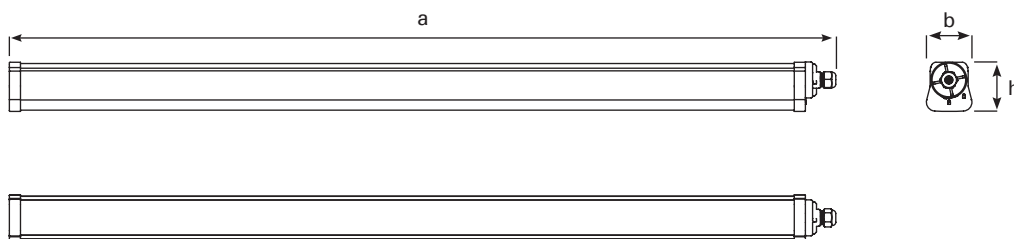
19 W – 75 W
2079 lm – 8347 lm

Opal Diffuser

The values specified above represent the minimum and maximum ranges for all variations of the product.

To access the technical specifications of the product that best suits your needs, please visit our website or contact our sales representative.

Technical Drawing



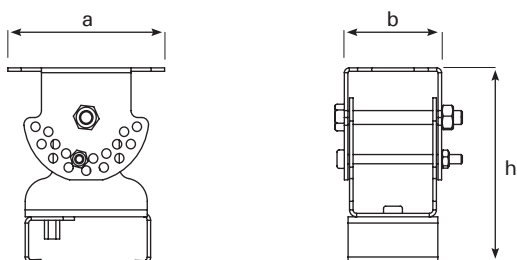
Dimensions (mm)

	a	b	h
545 cm	545	69	75
865 cm	865	69	75
1265 cm	1265	69	75
1505 cm	1505	69	75

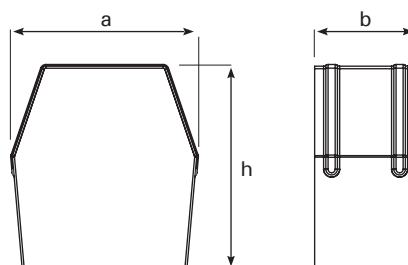
Weight (kg)

545 cm	1,00
865 cm	1,50
1265 cm	1,90
1505 cm	2,20

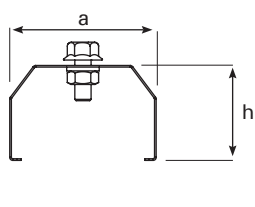
Angular Hanger Set



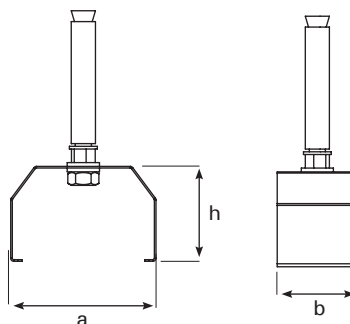
Long Hanger Spring Set



Cable Tray Hanger Set



Wall Hanger Set

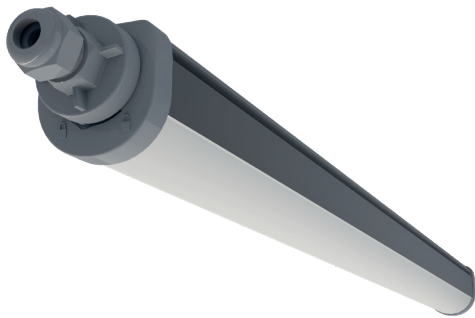


Dimensions (mm)

	a	b	h
Angular Hanger Set	70	41	85
Long Hanger Spring Set	55	30	60
Cable Tray Hanger Set	54	35	30
Wall Hanger Set	54	35	30

YPL
NG

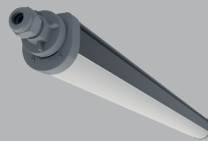
-20°C +35°C



- Parking Lot
- Logistics
- Industrial Areas

Great performance output

- ✓ IP66 protection & IK09 impact resistance class / Plastic extruded housing
- ✓ Ambient operation temperature from -20°C to +35°C
- ✓ Eye-friendly opal diffuser
- ✓ Different types of drivers for smart lighting
- ✓ Normal and Through-Wiring options

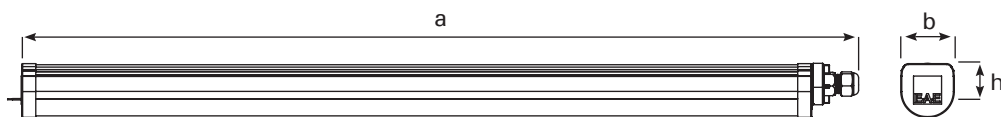


YPL
NG

30 W – 53 W
3013 lm – 5870 lm

Opal Diffuser

Technical Drawing



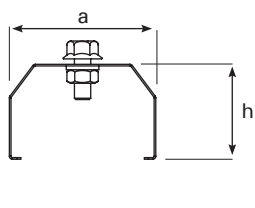
Dimensions (mm)

	a	b	h
85 cm	853	57	57
120 cm	1255	57	57
149 cm	1500	57	57

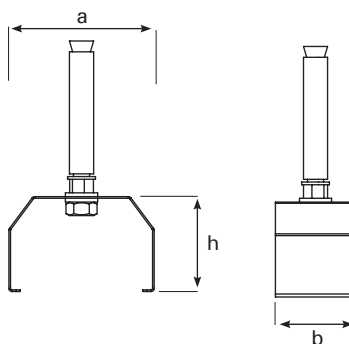
Weight (kg)

85 cm	0,90
125 cm	1,00
149 cm	1,30

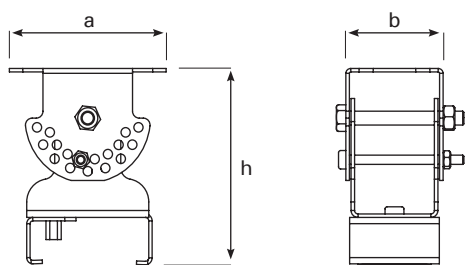
Fixed Hanger Set



Double Concrete Support Mounting Set



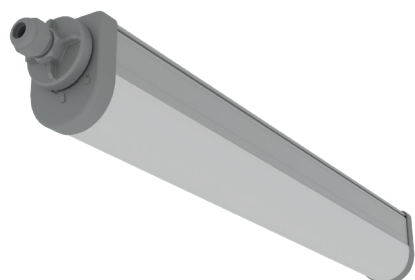
Angular Hanger Set



Dimensions (mm)

	a	b	h
Fixed Hanger Set	54	30	35
Double Concrete Support Mounting Set	54	30	35
Angular Hanger Set	70	41	85

TORIA MEGA



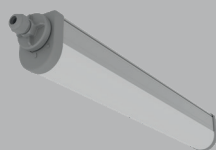
- Shipyards
- Ports
- Shipbuilding Facilities
- Aircraft Hangars
- Passenger Ship Facades
- Industrial Areas
- Parking Lots
- Outdoor Facilities

-20°C +40°C



Engineered for endurance, Illuminating tomorrow

- ✓ The Toria Mega luminaire stands out with exceptional durability and cutting-edge LED technology.
- ✓ IP Protection Class IP65 provides complete protection against dust and water, ensuring reliable performance even in harsh conditions.
- ✓ IK Impact Resistance Class IK09 offers enhanced resistance to mechanical impacts, making it ideal for industrial areas, parking lots, and outdoor applications.
- ✓ Available in power choices from 15W to 70W with a broad color temperature range of 3000K to 6500K, delivering tailored lighting solutions for any environment.
- ✓ Offers homogeneous light distribution to enhance visual comfort.
- ✓ Constructed with a minimalist aluminum extrusion body that combines modern aesthetics with functionality.
- ✓ Performs reliably in temperatures from -20°C to +40°C, ensuring maximum durability for both indoor and outdoor applications.



TORIA MEGA

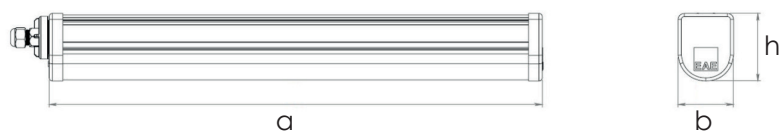
15 W – 70 W
2190 lm – 9230 lm

OPTIC
Opal Diffuser

The values specified above represent the minimum and maximum ranges for all variations of the product.

To access the technical specifications of the product that best suits your needs, please visit our website or contact our sales representative.

Technical Drawing | Single Module



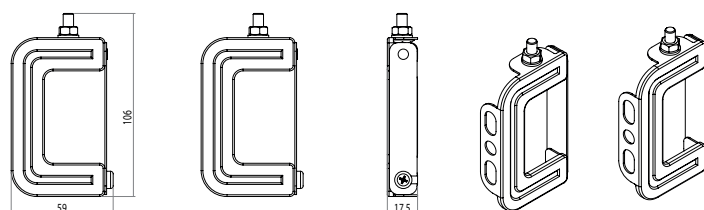
Dimensions (mm)

	a	b	h
60 CM	615	87	70
90 CM	916	87	70
120 CM	1216	87	70
149 CM	1457	87	70

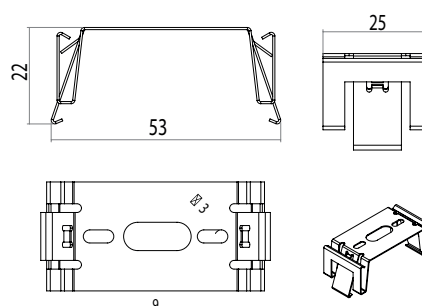
Weight (kg)

60 CM	1,05
90 CM	1,13
120 CM	1,56
149 CM	1,99

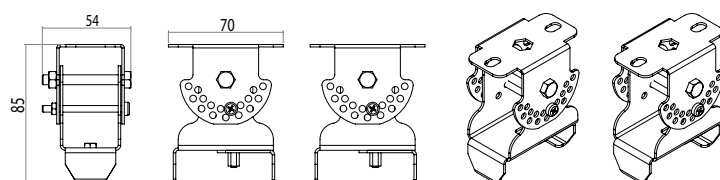
Busbar Hanger Set



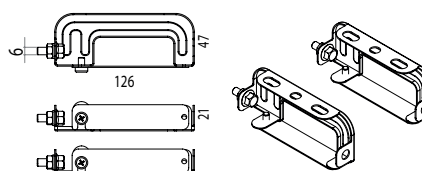
Standard Hanger Set



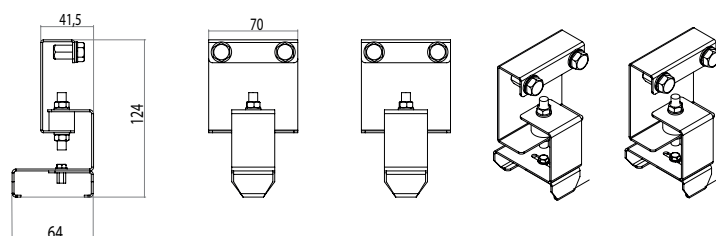
Angled Hanger Set (Stainless)



KYS Busbar Hanger Set



Fixed Hanger Set



SAVIOR MATE



- Tunnels
- Mining areas
- Other harsh working environments

+5°C +50°C



Designed for urgent needs

- ✓ Savior Mate provides a reliable lighting solution in environments where power outages occur or access to electricity is limited.
- ✓ Uninterrupted lighting, provides continuous illumination for up to 3 hours.
- ✓ Practical use: Equipped with an on/off switch for instant operation when needed.
- ✓ IK09 impact resistance class
- ✓ Available with 5W in battery mode

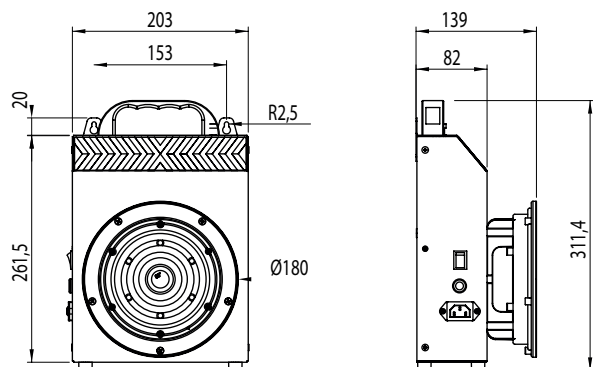


SAVIOR MATE

10W
1620 lm

OPTIC
PC Lens

Technical Drawing



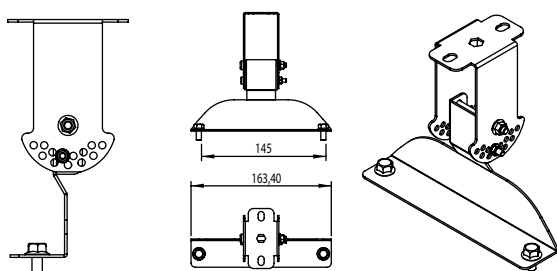
Dimensions (mm)

	a	b	h
Standard	261,5	203	139

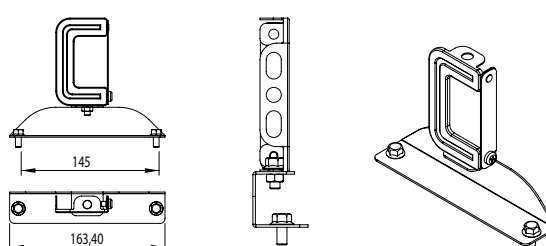
Weight (kg)

Standard	2,75
----------	------

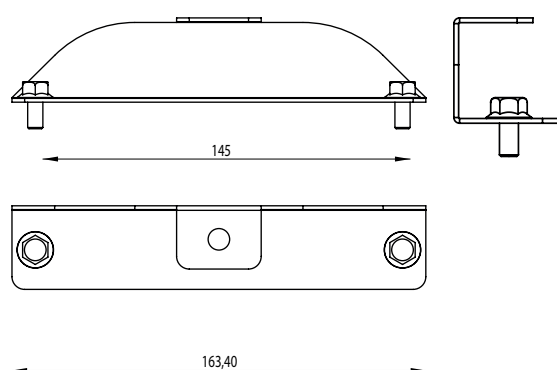
Angled Wall Ceiling Hanger Set



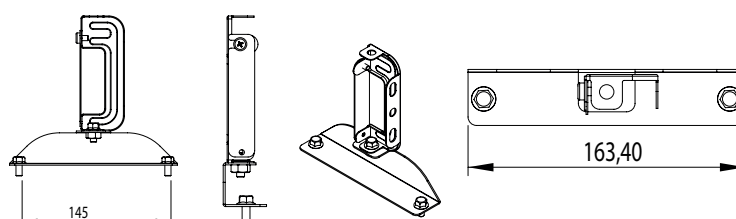
Busbar Hanger Set



Cable Tray Hanger Set



KYS Busbar Hanger Set





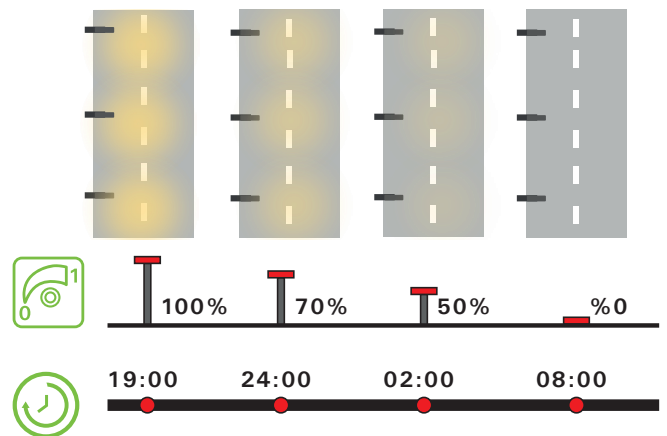
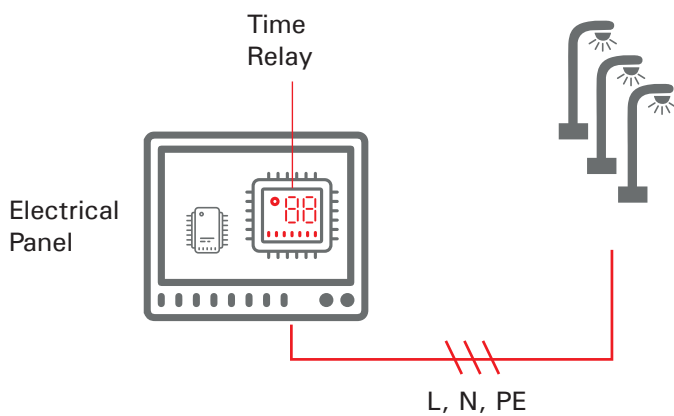
Meet Sustainable Energy Saving!

Dimko is used as a signal generator in light control devices, dimmer/increase control of time relays. The module is an EAE Lighting control solution that allows the user to adjust the time and lighting level.



DIMKO SCENARIO

System opening and closing hours can be set with 7 different scenarios according to summer and winter months.



Products compatible with DIMKO



RA

RA 2

RA 3

ARKTOS

DIMKO



Quick, easy and affordable...

%81
Energy savings up to 81%.



Dimming system that does not harm the ecosystem.





No maintenance costs.

%55
ABOVE
Savings of more than 55% on lighting expenses.


Advantageous installation
Installation without expensive duct excavations.


Efficient time management.
It can be programmed within 40 seconds.


Possibility of use with existing infrastructure
No need to replace existing luminaires and poles.


Simple control
Provides control without the need for a team of experts.



PROLIT



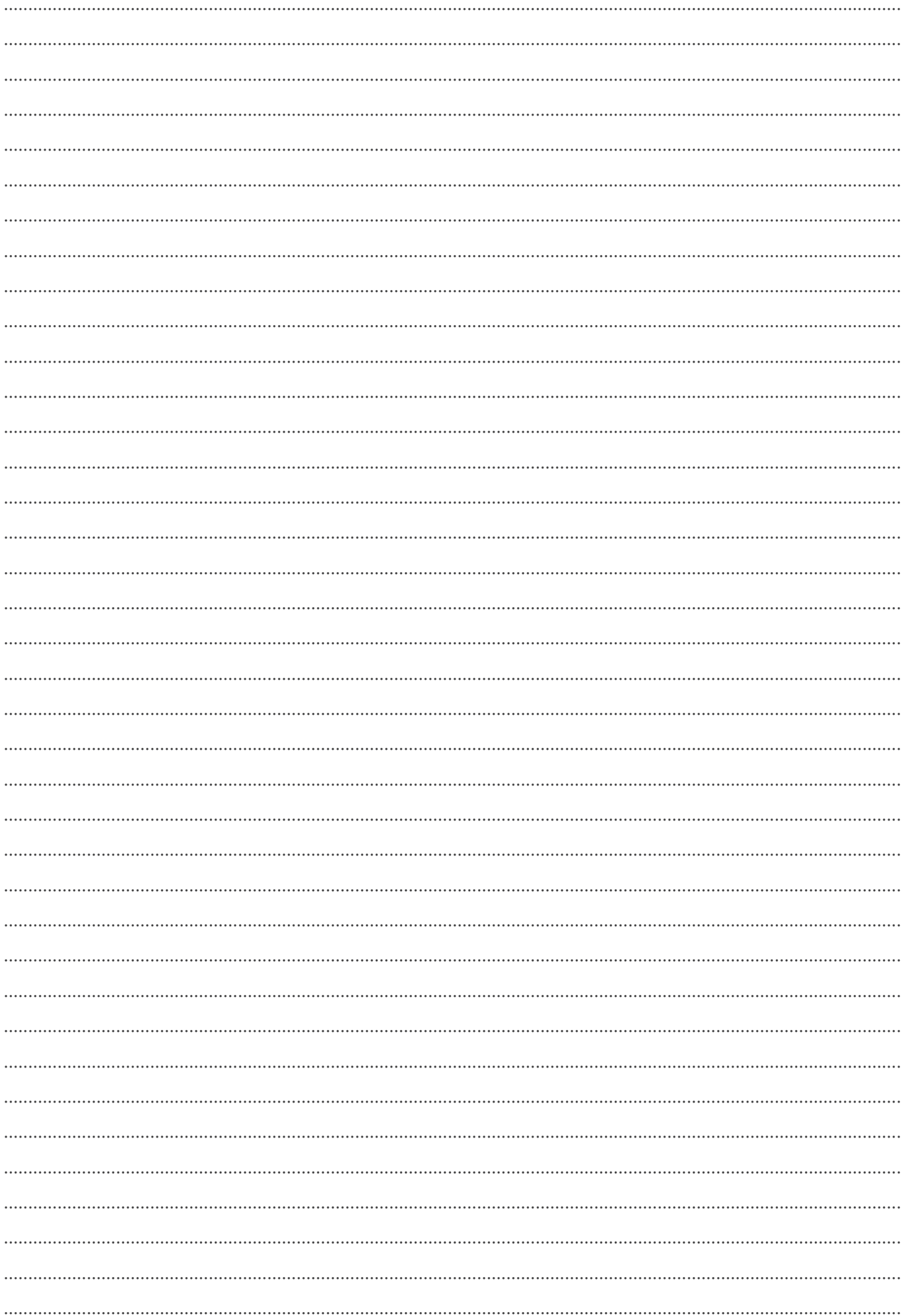
PROLIT PLUS



PROLIT KOMPAKT



**PROLIT-M PRM
V.2**







EAE LIGHTING Industry Lighting Products (Catalogue) - Updated: 25.03.2025

EAE Lighting reserves the right to make changes deemed necessary without prior notice. Please contact us for more information about the products and details in the catalog.



EAE Lighting
İkitelli OSB Mah. Eski Turgut Özal Cad.
EAE No: 20, İç Kapı No: Giriş Kat
Başakşehir / İSTANBUL - TÜRKİYE
Tel : +90 212 413 21 00 (pbx)
Faks : +90 212 549 37 90
www.eaelighting.com



engineering the light